

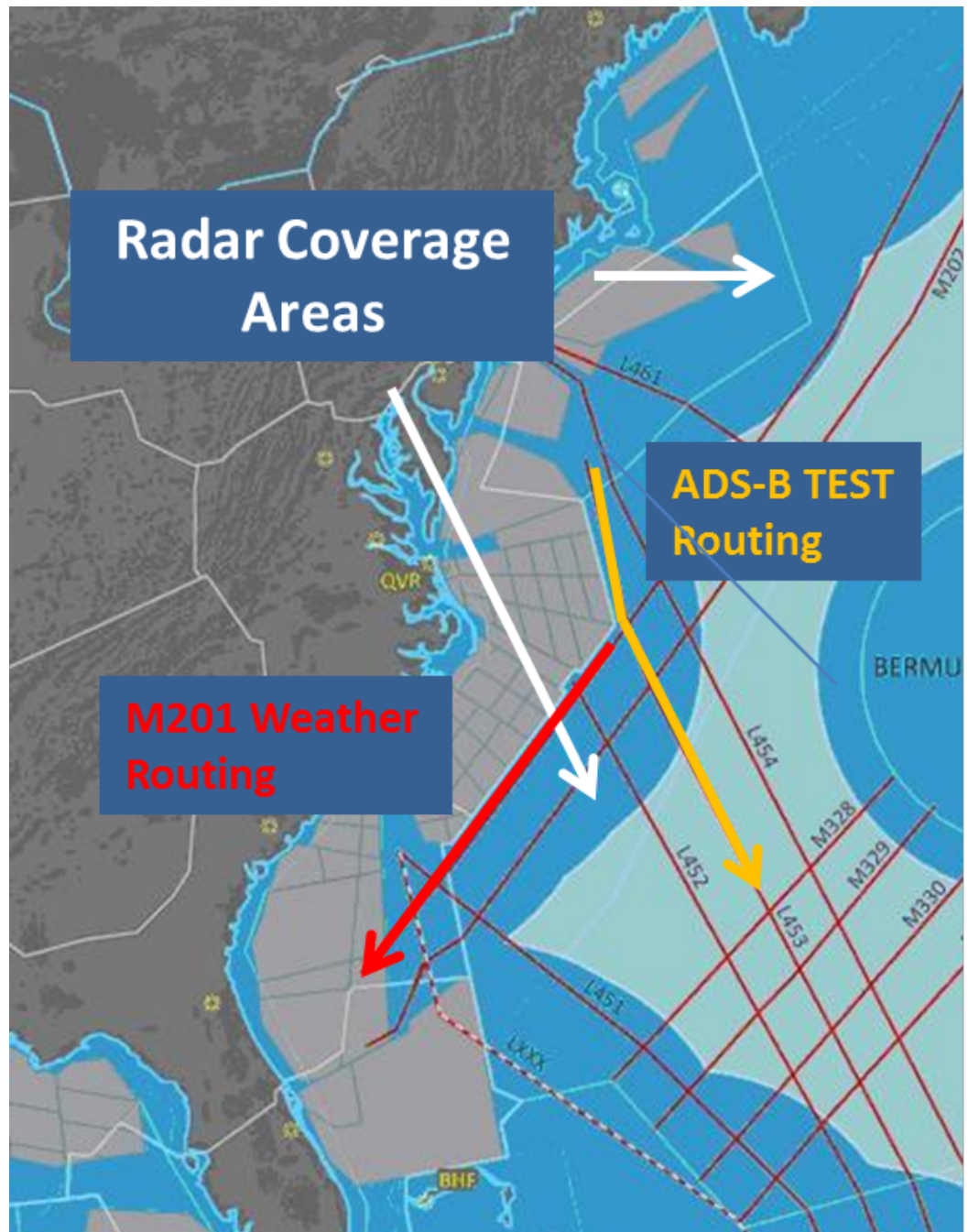
Manage with options, not with certainty.

Spring 2015 “Connecting Initiatives”

Road Map for 2015
Presented by: Bill Ruggiero

ADS-B Passes Test as Sole-Source Surveillance

The test, conducted during a four-hour window on May 20, involved four aircraft flying a route that normally would have been restricted because of the planned maintenance outage of the ground-based radar for the area. Air Traffic Services worked with Technical Operations, the Command Center, NATCA and JetBlue Airways to show that Automatic Dependent Surveillance-Broadcast is ready for wider use in the national airspace system.



Connecting Initiatives for 2015

“The Northeast’s 12 step program”

- **Two points of focus:**

- On the tactical level leveraging the customer experience and expertize in reroute activities
 - Enable, Preplan and Publish
 - Share the ability to route out of congestion and weather
 - Additional focus on international operations
 - Timing of advisories
- Remove the road blocks preventing aircraft from departing
 - NRA - “No route available” - waiting for alternative routes
 - Routing away from large MIT

Connecting Initiatives for 2015

Two New Additions to the Twelve Step Program

“Do the Northeast B.O.P. “

“BOP” - northeast **Boundary** less **Operations Plan**

- Currently a ZNY ZDC initiative
- Removes volume restrictions on ZNY ZDC facility border
- Utilizes “metered flow” concept to maintain sector integrity
- ZNY/ZDC collaborate on N90 gate restrictions,
 - Prevents natural peaks from turning into departure stops
 - Reduces sector vectoring just prior to facility boundary for a concern two or three sectors downstream
 - Creates a more orderly flow than a spaced flow
- **Result:** Less frequent departure stops

Northeast Boundary less Operations Plan (BOP)

Concept

- Allows for individual fix loads to be better managed
- ZDC will give ZNY a 30 min lead time (when possible)
- Phraseology: “Hey NY we would like to “BOP on J75 for (weather/volume/etc.)”
 - Discuss what terminal restrictions work for both parties
- After coordination is complete, post it on the ESIS with the word BOP displayed.
- Limited to J75/J48 - until we review results
- No sector to sector requirement
 - When Bopping ensure you are “getting” what is coordinated
- ZNY (NATCA) will prepare a FEA to determine the best course of action for TMU and collaborate with ZDC

Northeast Boundary less Operations Plan (BOP)

4/27 - Real Life Example -Resulted in No ZDC Pass Back

- ZDC called ZNY - mdt/svr turbulence on J6 FL-260-380
 - ZDC to ZNY - 15 MIT P/S
- Rstns:
 - Parke - 20 mit (x iad)
 - RBV - 20 mit J6
 - MXE - 20 mit J6
 - ZBW - J6 - 30 mit
- Jointly examining the traffic load and N90 demand (“BOP” ing -)
 - PARKE - 10 x IAD
 - ZBW - J6 20 MIT

The New York Departure Advisory Initiative (NAI)

Concepts and Benefits

- Pre-coordinated routes with 1st and 2nd level tier facilities
- Used during high volume departure time frames or certain weather scenarios
- Net result is the offload routes are available much faster than today
- Natural next step to ZNY's SWAP statement changes in 2014
- Five major markets were deliberately excluded from change
- Northeast and Southeast TMOs met and agreed on details
- Restriction on volume and in-trail
- Not to be used to relocate flow; Just single flight offloads

The New York Departure Advisory Initiative (NAI)

Practice

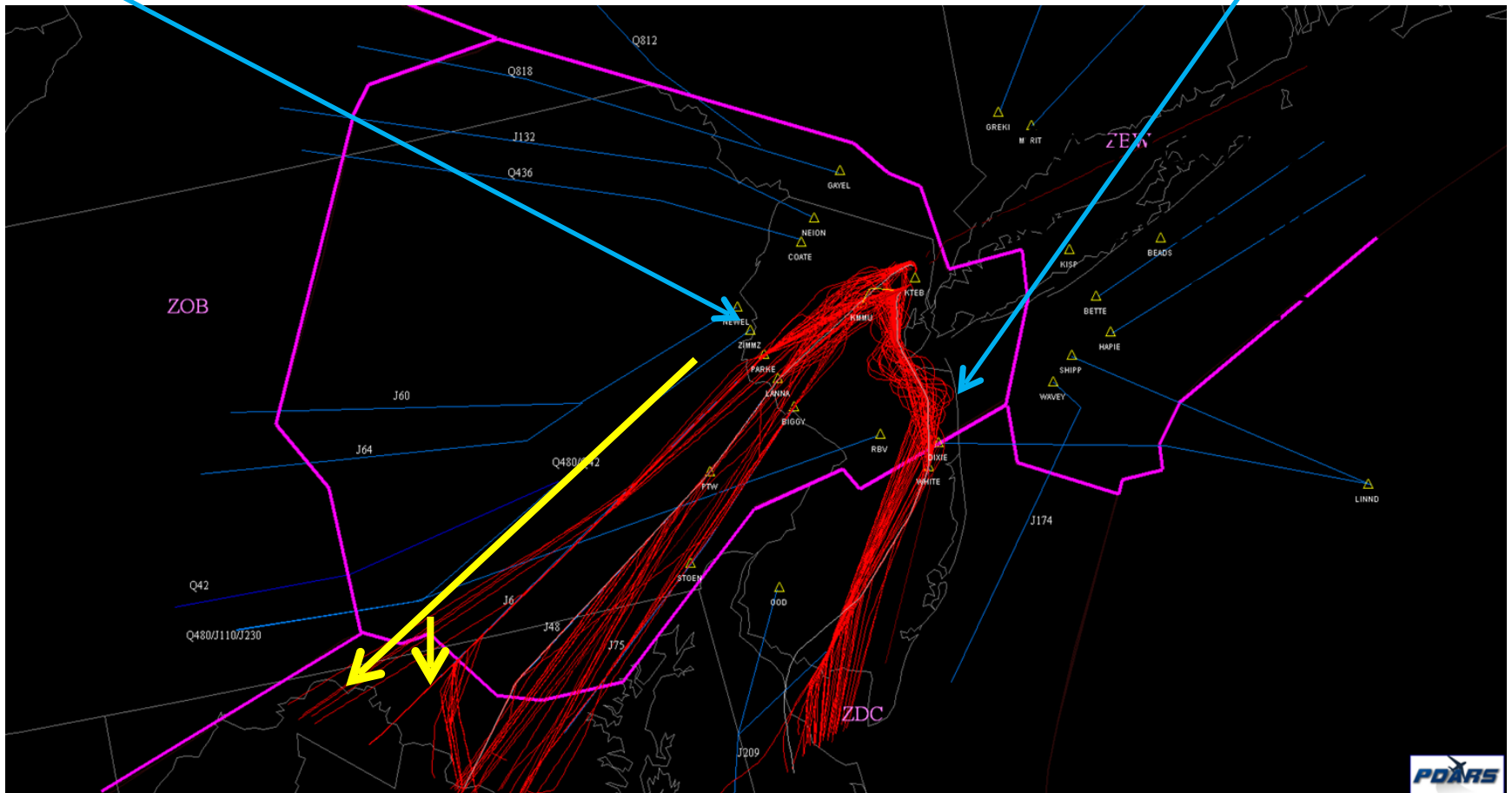
- ATSCC will issue departure advisory the night before
 - Enabling pre- coordinated departure offload routes for N90 and PHL
 - Routes are limited in volume and requiring spacing
 - Per hour limits
 - ATL(5) - CLT(3) - ORD(3) - DTW(5) - Florida 5 - E/W)

The New York Departure Advisory Initiative (NAI)

PARKE

TEB/EWR SATS via PARKE J6

WHITE



The New York Departure Advisory Initiative (NAI)

ATL:

J6.HVQ.J145.ODF.DIRTY2

WHITE.J209.ORF.J121.BARTL.J4.CAE.ONYON1 //

WAVEY..EMJAY.J174.ORF.....

PHL -

OOD..TEBEE..HAYDO.SBY.J79.KATZN.J193.WEAVR.J121.BARTL.J4.CAE.ONYON1

CLT:

J6.HVQ.JOHN3

WHITE.J209.SBY.J79.KATZN.J193.WEAVR.J121.BARTL.J4.FLO.HUSTN2 //

WAVEY..EMJAY.J174.ORF.J121.BARTL.J4.FLO.HUSTN2

PHL - OOD..TEBEE..HAYDO..SBY.J79.KATZN.J191.BARTL.J4.FLO.HUSTN2

The New York Departure Advisory Initiative (NAI)

ORD:

GREKI2

J60.DJB.NOLNN.Q62.WATSN.WATSN2

Q480.EMPTY.J149.FWA.WATSN2

DTW:

GREKI2

MXE.J110.FLIRT..BRNAN // RBV. J230.SAAME..BRNAN // ZIMMZ. Q42

BRNAN BRNAN.Q42.PSYKO..KOZAR..DJB.GEMNI3

The New York Departure Advisory Initiative (NAI)

FLA DEST:

PLAYBOOK: NE TO FLA J6 --- J6.HVQ..BULEY.J91.ATL

East/FLA -- ATL.J89.OTK.....

West/FLA -- ATL.J43.SZW.....

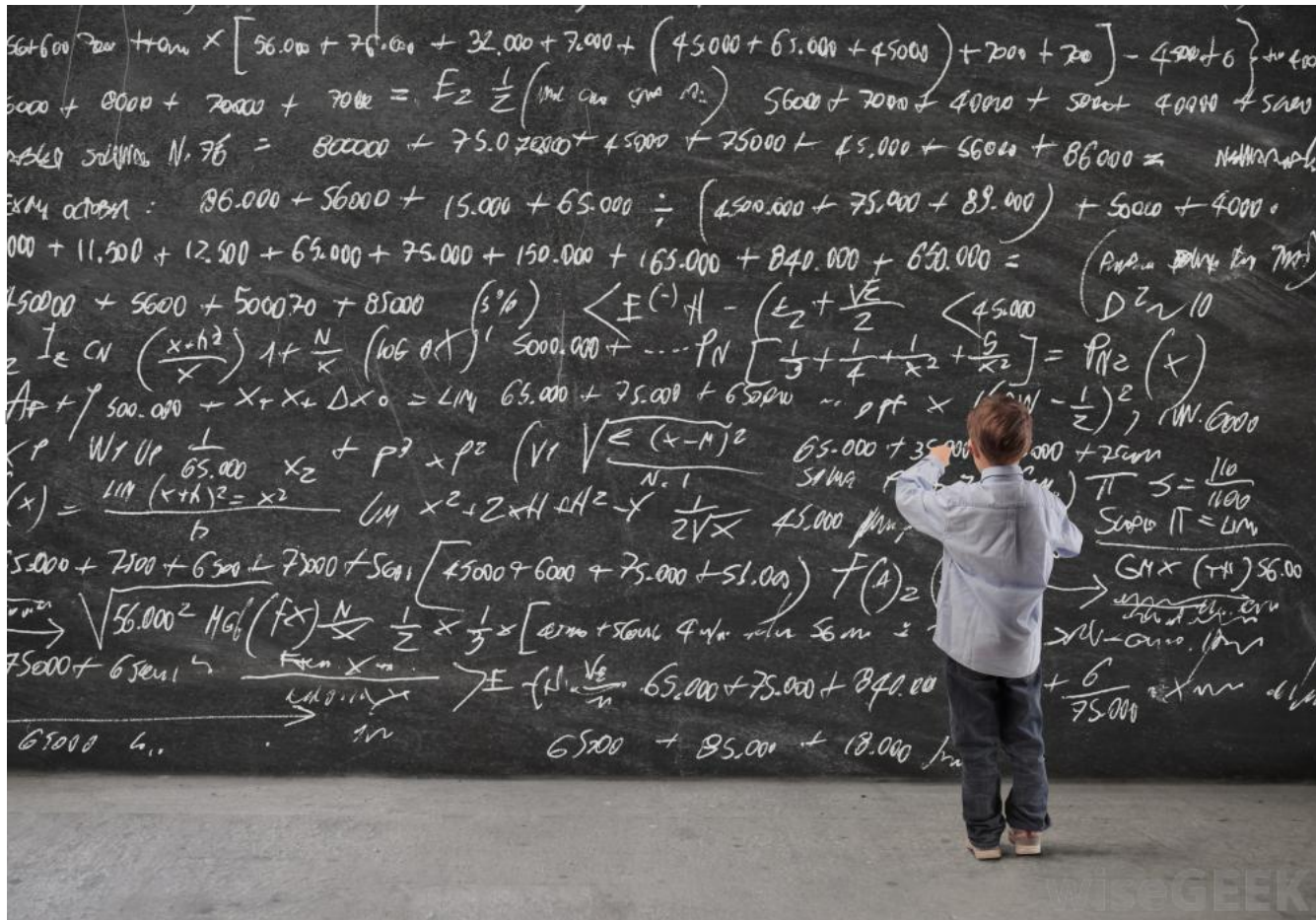
PLAYBOOK: NE TO FLA J48-2 J48.FLASK..SPA.J85.TAY....

PLAYBOOK: NE TO FLA J75 -

J75.CAE .J51.SAV.J103.OMN (E/FLA)

J75.CAE.J75. TAY/DUNKN (W/FLA)

Connecting Initiatives for 2015



Questions ?