

# TEB Monthly Stats - JUNE 2019

	<b>2019</b>	<b>2018</b>	<b>% ▲</b>
<b>Month Ops</b>	14,254	15,011	-5.04
<b>Jets</b>	11,543	12,194	-5.34
<b>YTD</b>	83,391	85,011	-1.91
<b>Int'l Arrivals</b>	714	726	-1.65
<b>YTD</b>	4285	3977	7.74

**Highest Activity Day:** 649 Ops Thursday June 6th

**Day w/ Over 600 Ops:** 3

# TEB Monthly Stats - JULY 2019

	<b>2019</b>	<b>2018</b>	<b>% ▲</b>
<b>Month Ops</b>	12,633	12,591	0.33
<b>Jets</b>	9,597	9,671	-0.77
<b>YTD</b>	96,024	97,602	-1.62
<b>Int'l Arrivals</b>	598	558	7.17
<b>YTD</b>	4883	4535	7.67

**Highest Activity Day:** 583 Ops Thursday July 18th

**Day w/ Over 600 Ops:** 0

# TEB Monthly Stats - AUGUST 2019

	<b>2019</b>	<b>2018</b>	<b>% ▲</b>
<b>Month Ops</b>	12,489	12,907	-3.24
<b>Jets</b>	9,667	10,045	-3.76
<b>YTD</b>	108,513	110,509	-1.81
<b>Int'l Arrivals</b>	488	557	-12.39
<b>YTD</b>	5371	5092	5.48

**Highest Activity Day:** 616 Ops Thursday August 8th




**Day w/ Over 600 Ops:** 1

# Teterboro Airport Construction

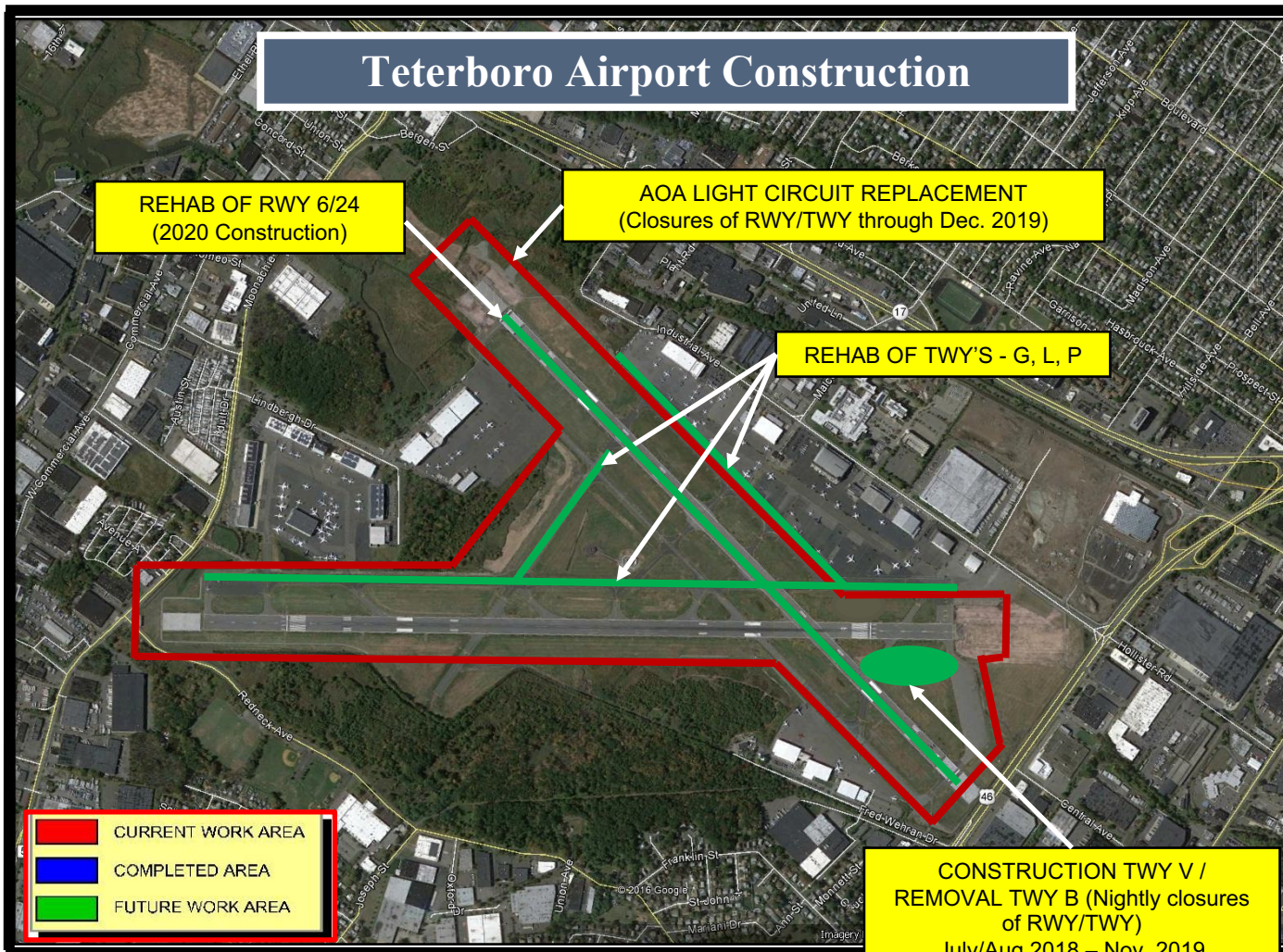
REHAB OF RWY 6/24  
(2020 Construction)

AOA LIGHT CIRCUIT REPLACEMENT  
(Closures of RWY/TWY through Dec. 2019)

REHAB OF TWY'S - G, L, P

-  CURRENT WORK AREA
-  COMPLETED AREA
-  FUTURE WORK AREA

CONSTRUCTION TWY V /  
REMOVAL TWY B (Nightly closures  
of RWY/TWY)  
July/Aug 2018 – Nov. 2019



# Area Airport Construction Projects

- LGA runway 4 (nights and 10 weekends April-Nov)
  - JFK runway 13L/31R reconstruction (April-Nov)
- EWR runway 11/29 construction (nights and extended weekends)



19003  
**AIRPORT DIAGRAM**

AL-890 (FAA)

**TETERBORO (TEB)**  
TETERBORO, NEW JERSEY

D-ATIS  
114.2 132.85  
TETERBORO TOWER  
119.5  
GND CON  
121.9  
CLNC DEL  
128.05  
CPDLC  
**D**

NE-2, 28 FEB 2019 to 28 MAR 2019

NE-2, 28 FEB 2019 to 28 MAR 2019

