

Teterboro Users Group

Teterboro delay initiatives

6/16/2021



PERTI Plan Information

Plan Execute Review Improve Train

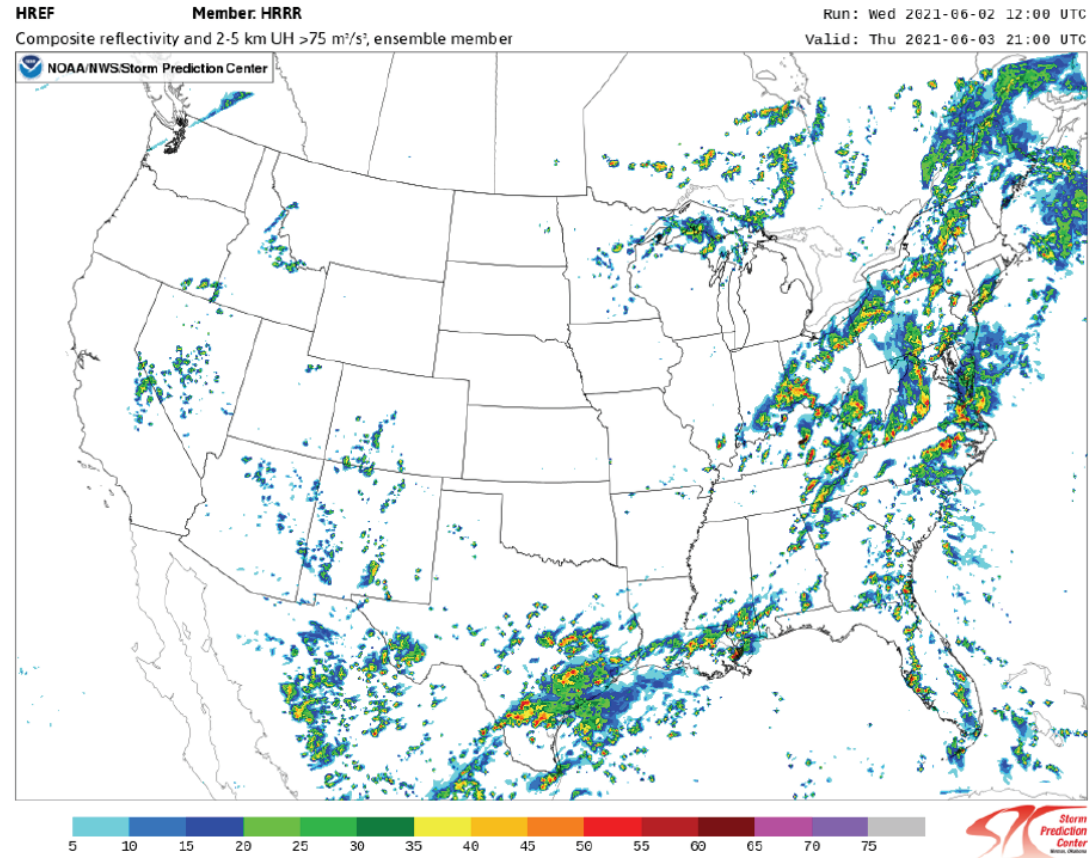
- PERTI plan call: FAA led call
- Report includes anticipated impacts and initiatives throughout the NAS
- Severe weather and other weather-related conditions
- Continuous planner
- PA forwards report to airport community as requested.
Includes local weather review and impacts, anticipated runway configurations and runway closures
- Initiated during the JFK runway construction project

Sample

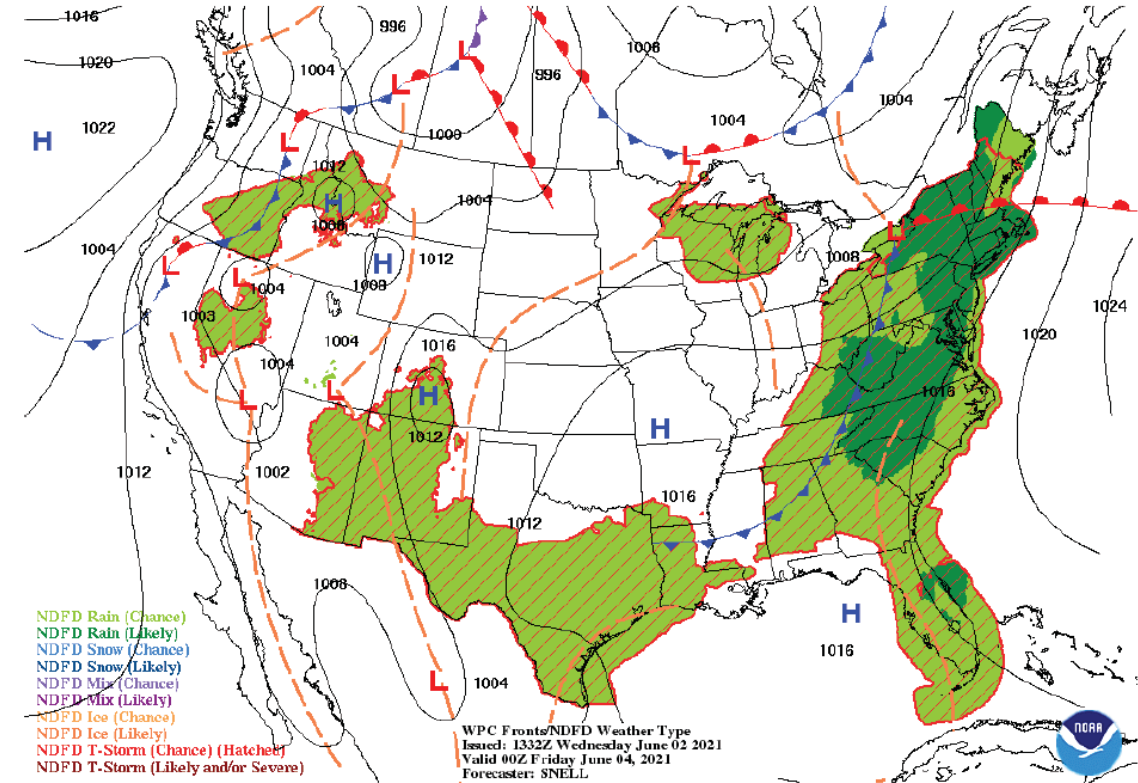
- Good evening
- Gusty NW winds diminish overnight to 10 kts
- Tomorrow clear skies and WNW winds 10-15 kts
- **Anticipated configurations**
- EWR land 22L depart 22R, 11/29 closed, 4R/22L closed 2300-0700
- TEB land and depart 24, runway 6/24 closed 0730-1000 lcl
- LGA Land 31 depart 4
- JFK land 31R depart 31L. 4L/22R closed 0700-1500, 4R/22L closed 0700-1000 lcl
- **NAS WIDE VIEW**
- Thunderstorm activity will impact Florida terminals throughout the day, with terminal and route initiatives possible. AR, Q/Y and Gulf route closures will be possible due to thunderstorms of the North Carolina coast and in the Gulf of Mexico. IAH/HOU and DEN could also see thunderstorm impacts.

Weather Forecasts

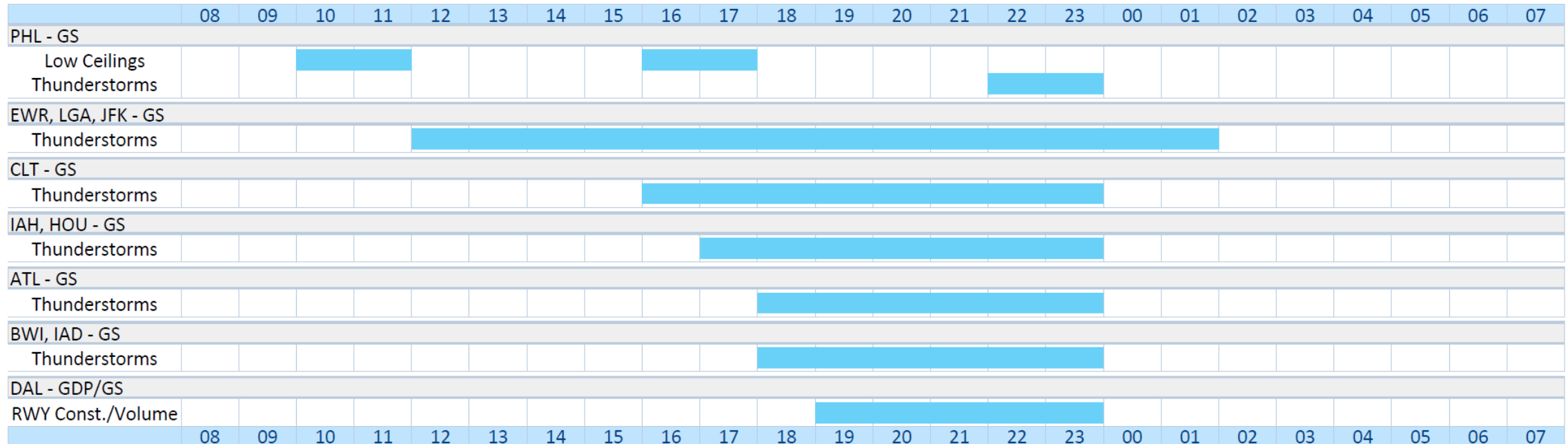
Reflectivity Forecast 21z 06/03/21



Surface Forecast 00z 06/04/21

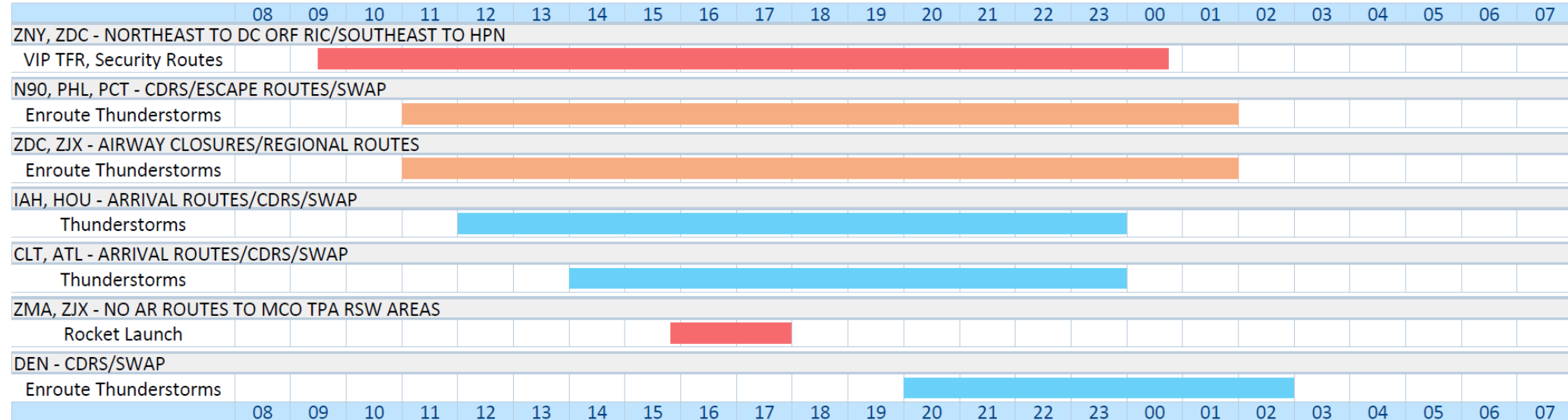


Terminal Initiatives



Probability	Possible	Probable	Expected	Actual
TMI				

En Route Initiatives



Critical Decision Window



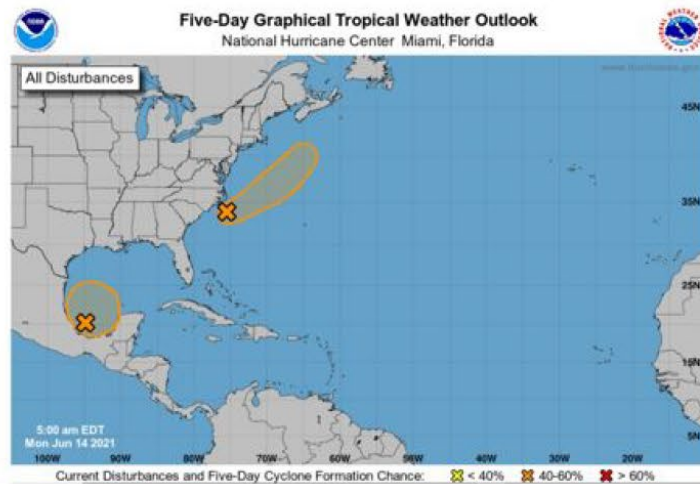
9

Probability	Possible	Probable	Expected	Actual
TMI				



Extended Outlook

June 14, 2021
5 Day Tropical Weather
Outlook
National Hurricane Center
Update, 12z

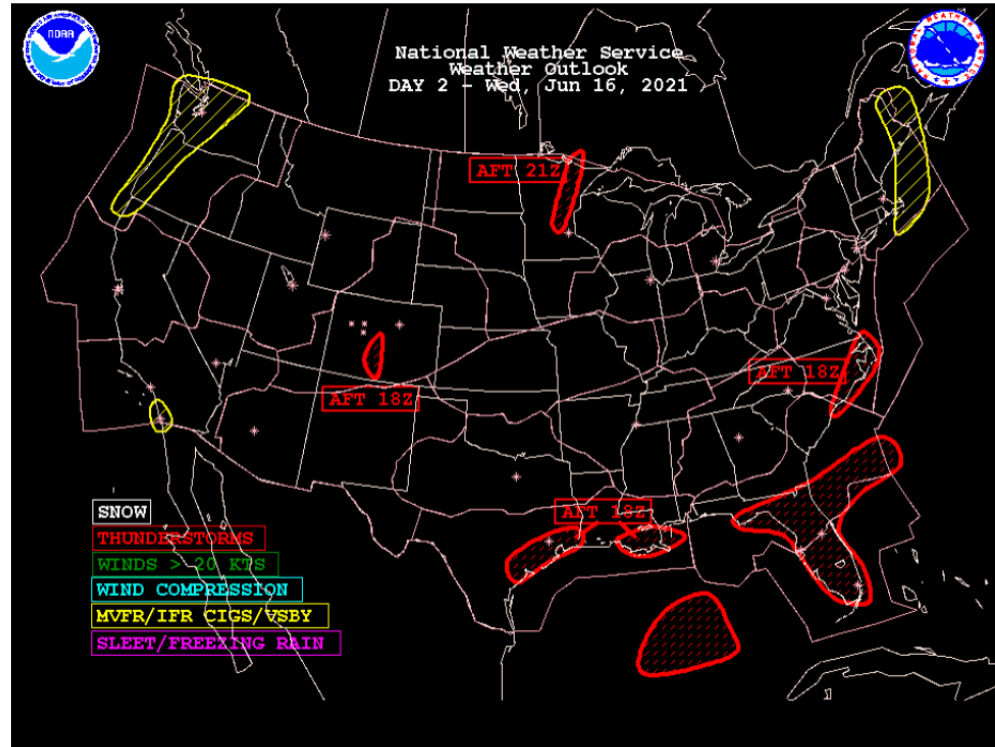


June 17, 2021
SpaceX GPS III-05 Falcon 9
Rocket Launch,
CCSFS/KSC, FL
1609-1712z

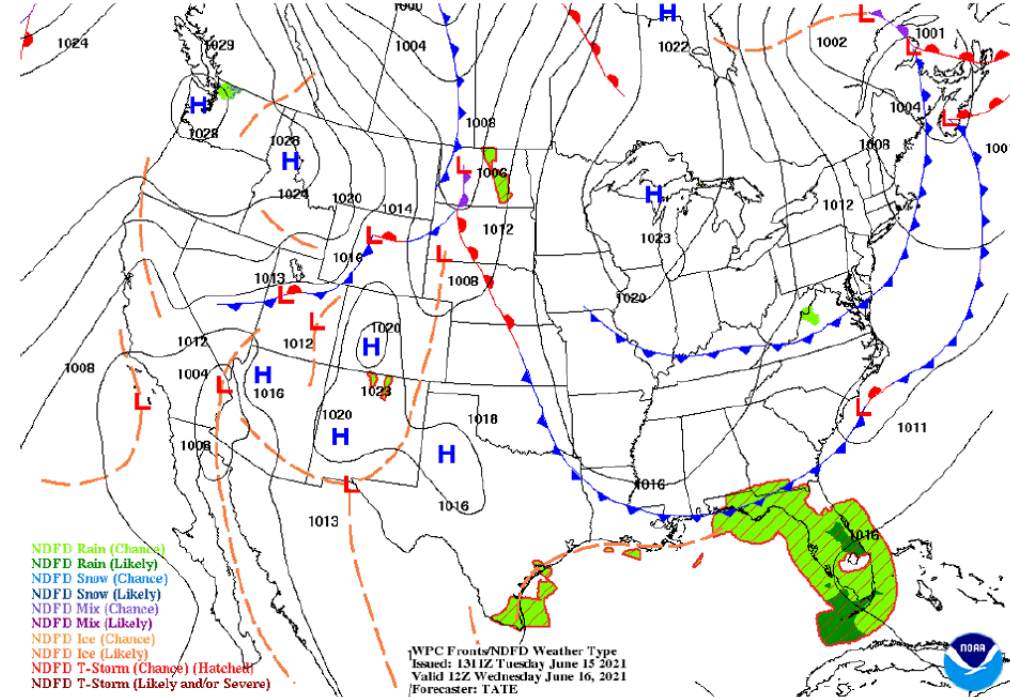


Weather Forecasts

Aviation Impact Graphic 06/16/21

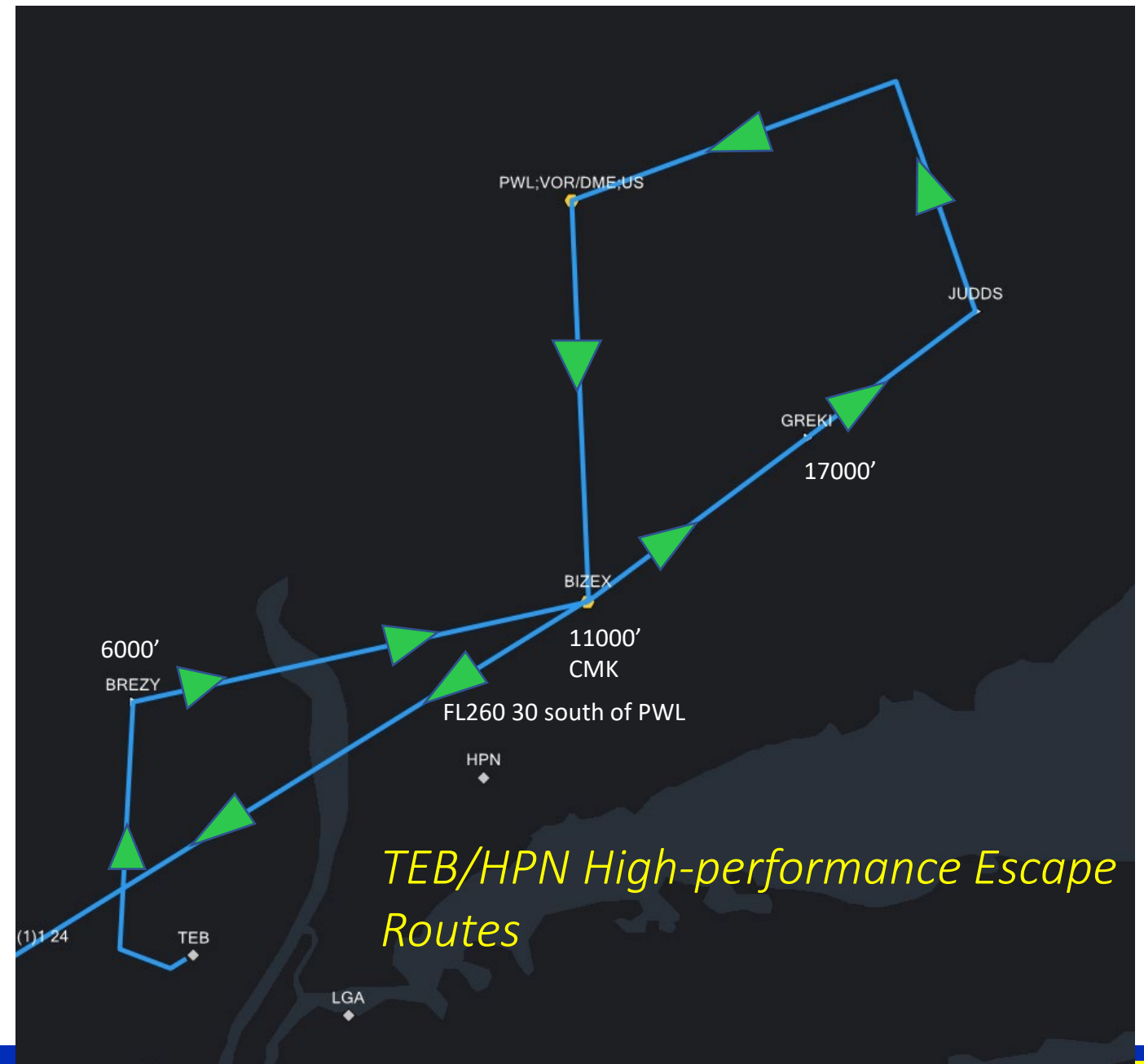


Surface Forecast 12z 06/16/21



TEB/HPN escape routes

- Allows for high performance aircraft to utilize climb performance to avoid volume and weather impacted areas
- A test flight was conducted in March which was successful.
- Aircraft easily made altitude restrictions even with a restricted climb.
- Follow-up discussions needed to discuss routes and the potential for operational use.



TEB Users Group (TUG)

EWR 4R/22L closure

- EWR 4R/22L rehabilitation project 4/2021 through 4/2022
 - Weekly update meeting
 - Currently runway 11/29 closed through 7/2 for intersection work
 - Runway 4R/22L will close 7/6 – 10/1/2021, limited capacity under certain conditions
 - Weekend closures, Friday through Sunday, 10/21 to 4/2022
 - Numerous equipment outages due to construction.

Other initiatives

- Surface surveillance of Teterboro airport using ADS-B (SAAB inc)
(Grant application)
- Vianair installing ADSB sensor within a few months.
- Arrival demand management using GreenLandings (Grant Application)
- Departure management using PACER (MITRE) - 2022

QUESTIONS?

Contact information

Ralph Tamburro

rtamburro@panynj.gov



This Photo by Unknown Author is licensed under [CC BY-SA-NC](#)

“A World Class Operator of World Class Airports”

12