

TEB Manager's Meeting

PORT
AUTHORITY
NY NJ

AIR LAND RAIL SEA

July 2022



TEB Manager's Meeting

July 2022



TEB – Monthly Statistics
Airport Manager
Maria Sheridan

TEB JUNE 2022 Statistics



Presented at the JULY 2022 – Airport Manger’s Meeting

	2022	2021	% Change
Month A/C Ops	15,100	12,168	24 %
Month Jet Ops	12,478	10,040	24 %
YTD A/C Ops	82,814	58,952	40 %
Fuel (gals)	5,057,147	4,005,981	26 %
YTD Fuel	28,810,478	19,923,950	45 %
Int’l Arrivals	800	394	103 %
YTD Int’l Arr.	4,520	2,246	101 %

Highest Activity Day: 694 – Wednesday, June 23rd

Day(s) w/ Ops Over 600: 3

TEB Manager's Meeting

July 2022



Airport Operations Update
Manager, Airport Operations & Security
Scott Marsh

TEB Manager's Meeting – July 2022

Airport Operations – Project Update

➤ Airfield Construction

RWY 6/24 Rehabilitation – 2022 - 2023

Hours of Work:

Runway 6-24 Closures:

Weeknights: (April 2022 thru April 2023)

- Sunday, Tuesday, Wednesday, and Thursday - 10:30 pm to 6:30 am the following morning
- Monday 10:30 pm to 8:30 am Tuesday

Weekends: (May 2nd – Nov 30th)

- 38-hour closures – Friday 10:00 pm to noon Sunday (May 2nd thru August 31st – total of 7)
- 12-hour closures – Sunday 12:01 am to noon Sunday (Oct 1st thru Nov 30th – total of 6)

Airport Closures - Weekends:

- 38-hour closures – Friday 10:00 pm to noon Sunday (July 1st thru Aug 31st – total of 6)
- 12-hour closures – Sunday 12:01 am to noon Sunday (Oct 1st thru Nov 30th – total of 2)

TEB Manager's Meeting – July 2022

Airport Operations – Project Update

➤ Airfield Construction

FAA Construction

➤ ILS RWY 19 System Upgrade

- Full ILS OTS; July 11th – November 1st
- PAPI (RWY 19) OTS; July 11th – July 31st
- RWY 06 Rollout RVR OTS; July 11th – July 31st

➤ RWY 01 VASI upgraded to PAPI

➤ Power Distribution Upgrades to: (tentative dates July 11th – Nov 18th)

- RWY 01 VASI/PAPI
- RWY 01 REILs
- RWY 06 GS
- RWY 06 LOC
- RWY 24 PAPI
- ASOS

TEB Manager's Meeting – July 2022

Airport Operations – Project Update

➤ FAA Control Tower

- ORIGINAL 300' CRANE REPLACED WITH A 231' CRANE ON MAY 19, 2022.
- NOTAMs ISSUED due to the 231' CRANE:
- FDC 2/6498 TEB IAP - ILS OR LOC RWY 6, AMDT 291... S-ILS 6 DA221/HAT 215 ALL CATS.
- FDC 2/6497 TEB IAP - RNAV (GPS) Y RWY 19, AMDT 1... LPV DA281/HAT 275 ALL CATS.
- FDC 2/6496 TEB IAP - ILS OR LOC RWY 19, AMDT 1... S-ILS 10 DA281/HAT 275 ALL CATS.

TEB Manager's Meeting – July 2022

Airport Operations – Project Update

➤ Local Airport Update

EWR

- RWY 4L/22R Interim Rehabilitation
 - Multiple periods of runway closures
- TWY Z Rehabilitation

JFK

- RWY 4L/22R Interim Rehabilitation
 - Multiple runway closures of 96-hours and 24-hours
- TWY C Rehabilitation

MMU

- RWY 23 GS and MALSR upgrades
 - June 3rd – August 26th
 - RWY 23 Displaced Threshold

TEB Manager's Meeting – July 2022

Airport Operations – Wildlife Reporting

- Report all wildlife activities observed on the Airport
- Report all Aircraft Strikes (birds, mammals)
- Allow Airport Operations or USDA Wildlife Services Staff to collect Snarge samples for proper identification of species
- Don't attempt to clean aircraft until samples have been taken

TEB Manager's Meeting – July 2022

Airport Security Update

- Airport Community Watch Program
 - Audit Update

TEB Manager's Meeting – July 2022

Airport Operations – Driver Training

- 2022 Airfield Driver – Train-the-Trainer Program
- Classes will be conducted on:
 - Tuesday, **July 19th from 10:00L – 12:00L**
 - Friday, **July 22nd from 10:00L – 12:00L**
- Location: Airport Managers Conference Room at 90 Moonachie Ave.
- Contact: Bruno Eiras

TEB Manager's Meeting

July 2022



Airport Construction Update

Kenneth Wright

CONSTRUCTION UPDATE

July 2022

TEB-144.063A

Rehabilitation of Runway 6-24

General Contractor: Tilcon New York, Inc.

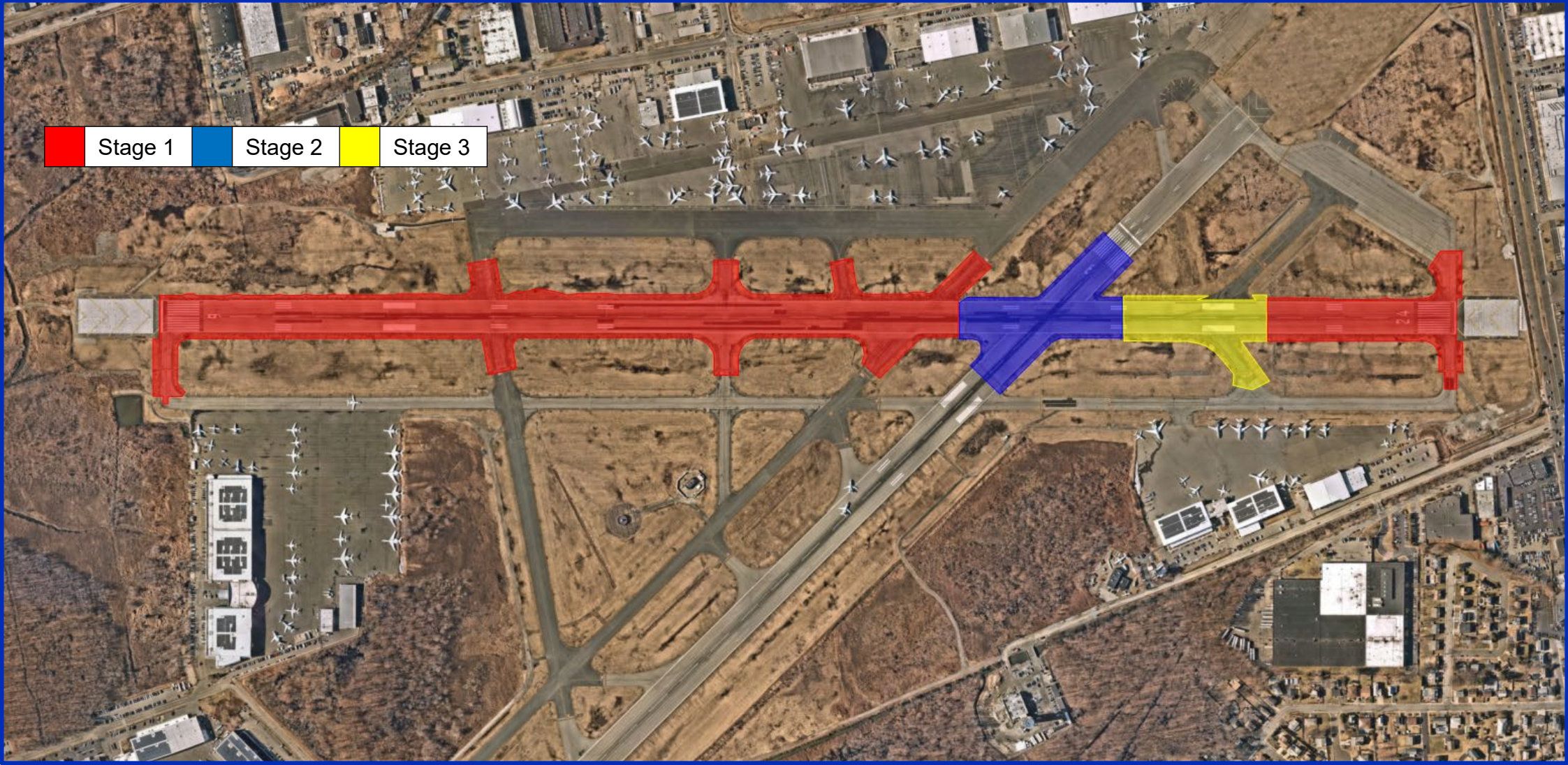
Award Date: March 14, 2022

Preconstruction Meeting Date: March 22, 2022

Contract Authorization: \$12,417,803

Project Update: Taxiways G,H,L,Q paved. Runway 6-24 paved (station 0+00 to 31+00). Basecans installed (252 out of 363).

Construction Staging



Contract Milestones

Description	Scheduled Completion Date
Complete all asphalt milling and paving work, excluding grooving	August 31, 2022
Complete all electrical light systems work, including photometric testing, except Runway 6-24 TDZs	November 30, 2022
Complete all remaining work	April 28, 2023

TEB 144.063A - Rehabilitation of Runway 6-24

Runway Paving and Line Striping



TEB 144.063A - Rehabilitation of Runway 6-24

Installation of Base Cans and Ground Rods



TEB Manager's Meeting

July 2022



FAA Operational Update
ATCT Manager
Jason Beim

TEB Manager's Meeting

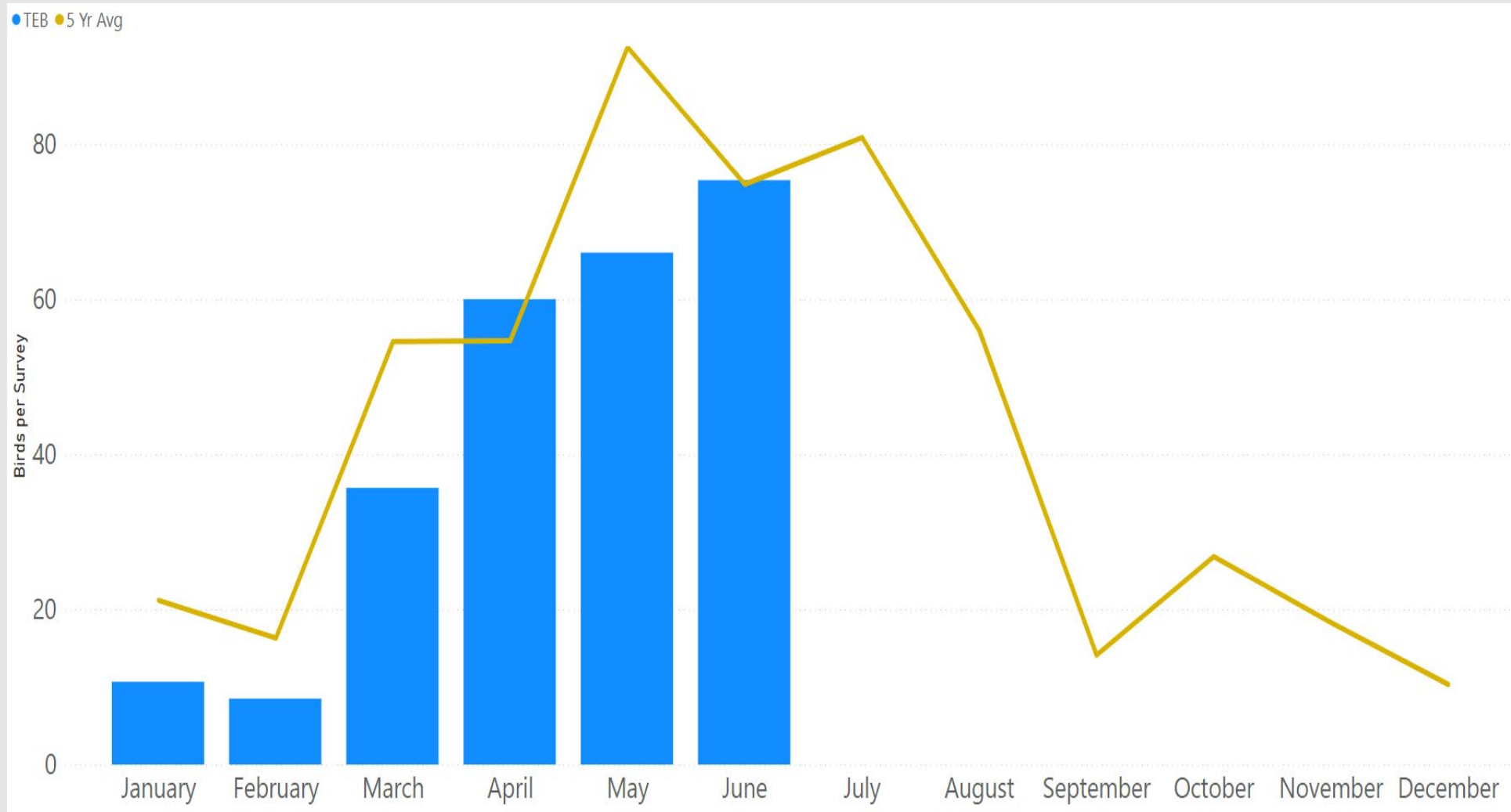
July 2022

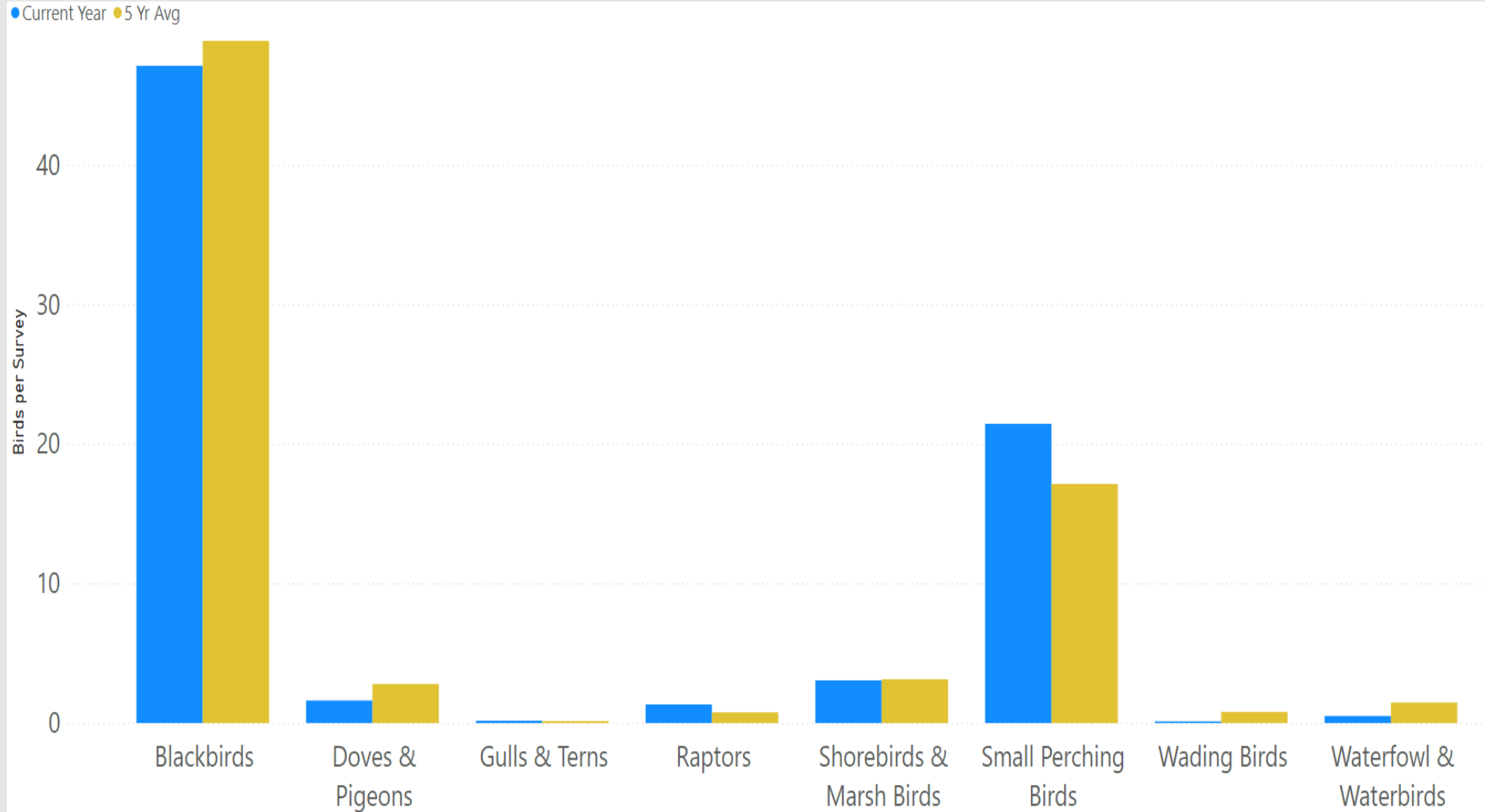


Wildlife Management Update

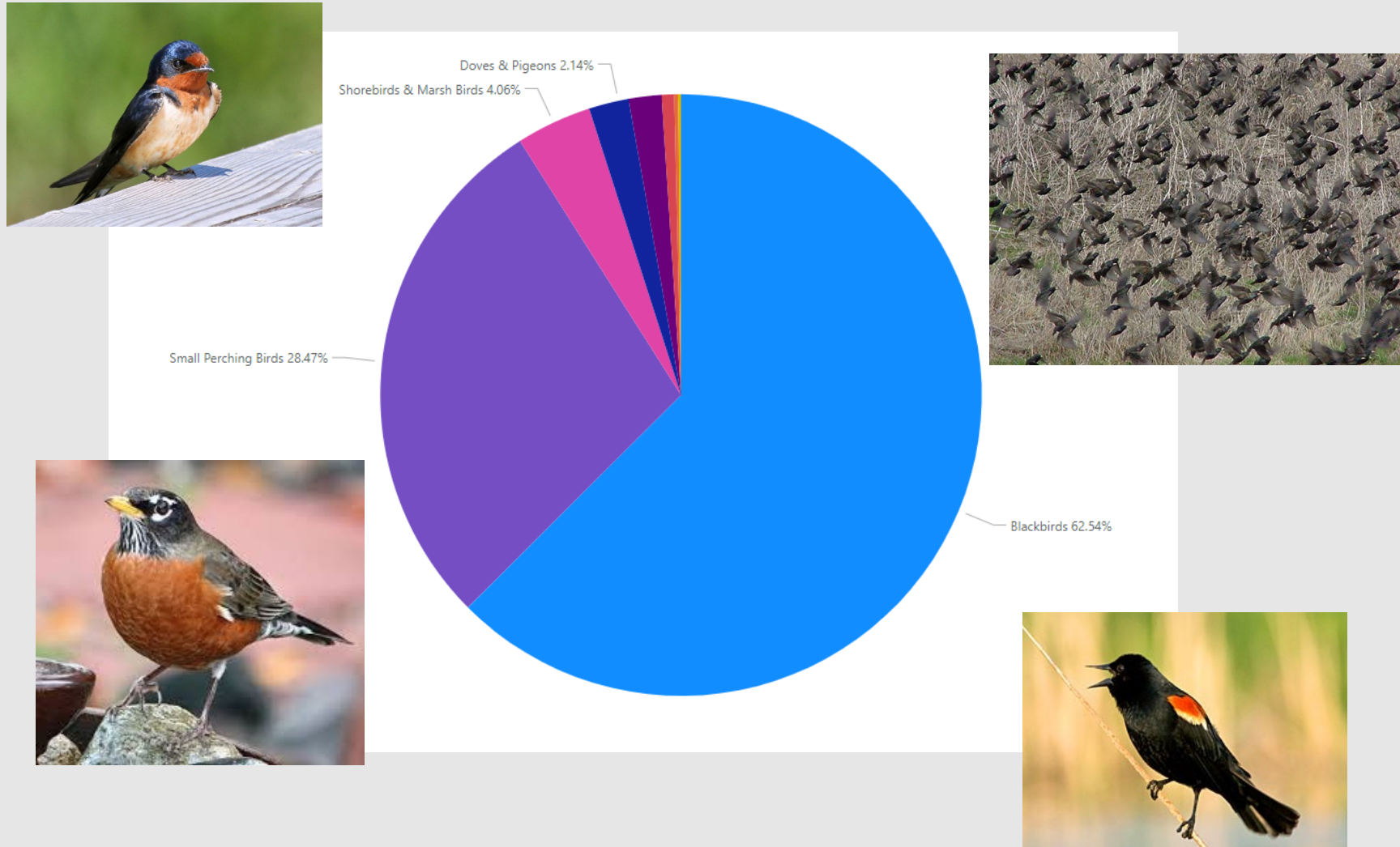
Terri Riotto – USDA







On-Airport Observations by Guild





Raptor Relocations

Month	Species	Number trapped and relocated
February	American kestrel	1
March	American kestrel	13
April	American kestrel	36
YTD Total		50

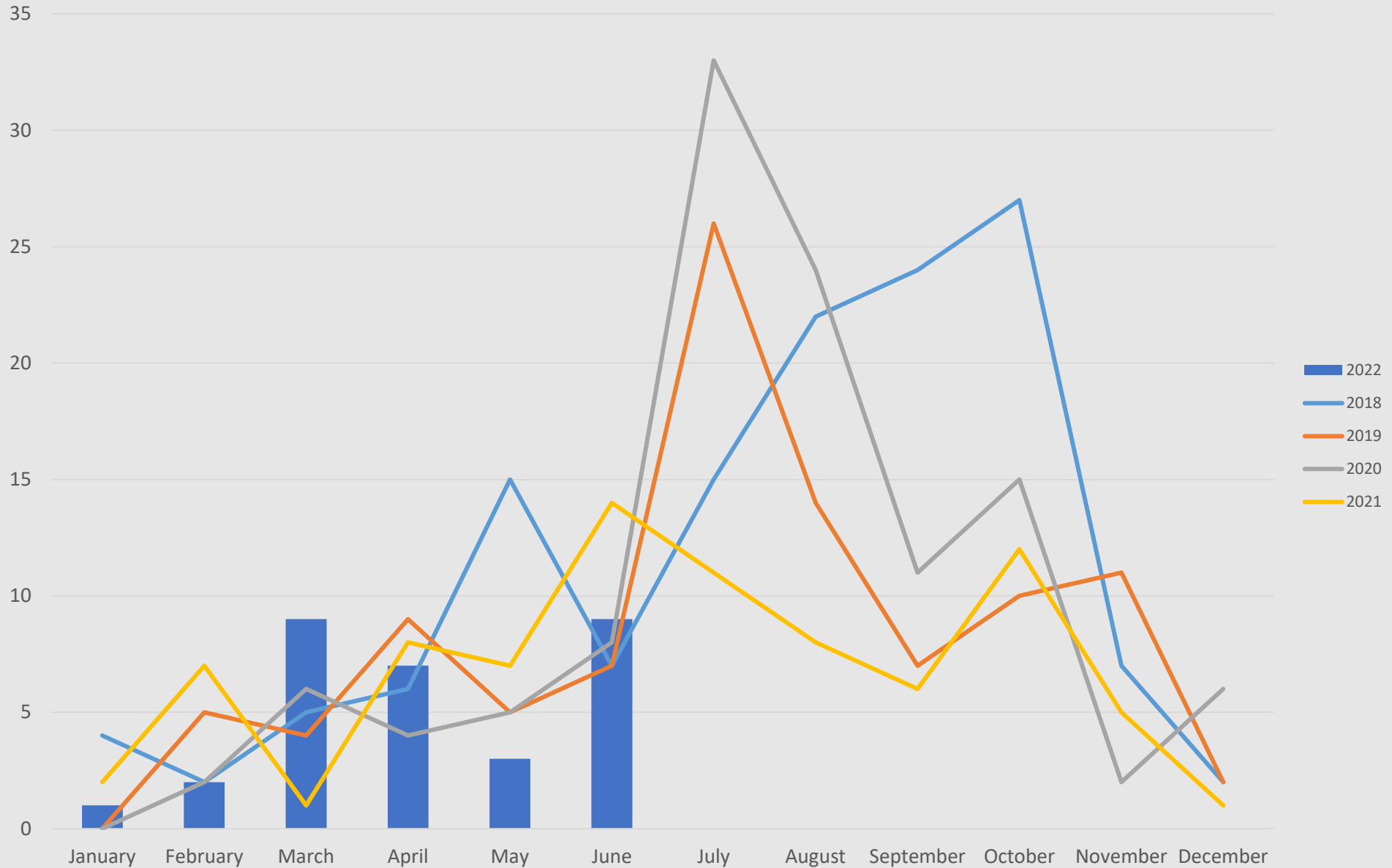
June Wildlife Strikes

Species	Strikes	Comments
American robin	2	
Chimney swift	2	
Killdeer	3	
Red-winged blackbird	1	
Snapping turtle	1	
Total	9	





TEB Strikes 2018-2022



TEB Manager's Meeting

July 2022

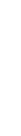


TEB Noise Office Update
Gabe Andino



Airport Manager's Meeting
Noise/Environmental Update

July 13, 2022



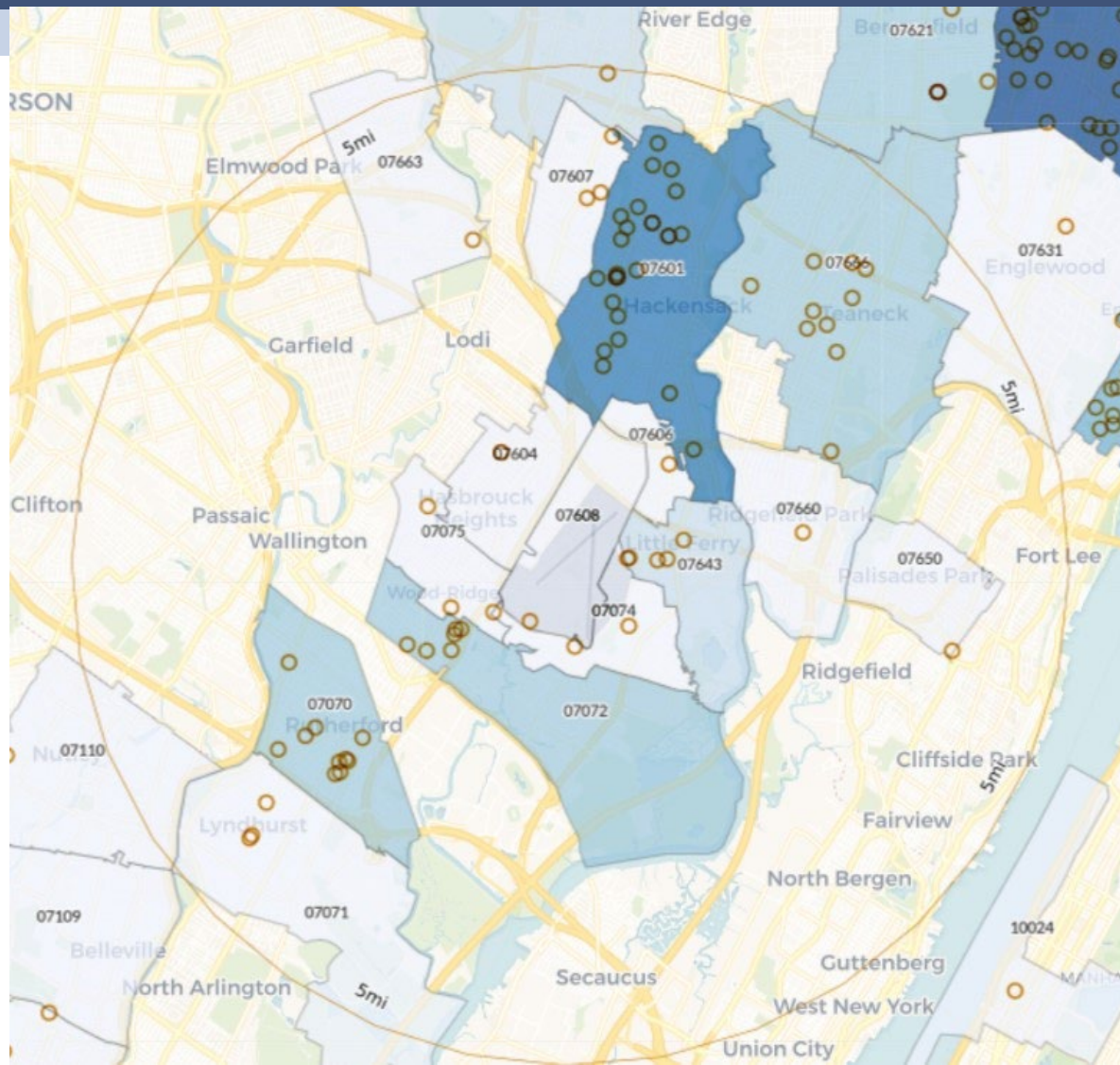
Noise Complaints

June 2022

	2022		2021	
	Complaints	Callers	Complaints	Callers
June PANYNJ Complaints	3,563	269	883	49
YTD PANYNJ Complaints	24,558	864	3,648	127
June Third-Party App Complaints	4,675	38	2,437	3
YTD Third-Party App Complaints	20,481	53	12,376	5
June Total Complaints	8,238	307	3,320	52
2022 Total Complaints	45,039	917	16,024	132

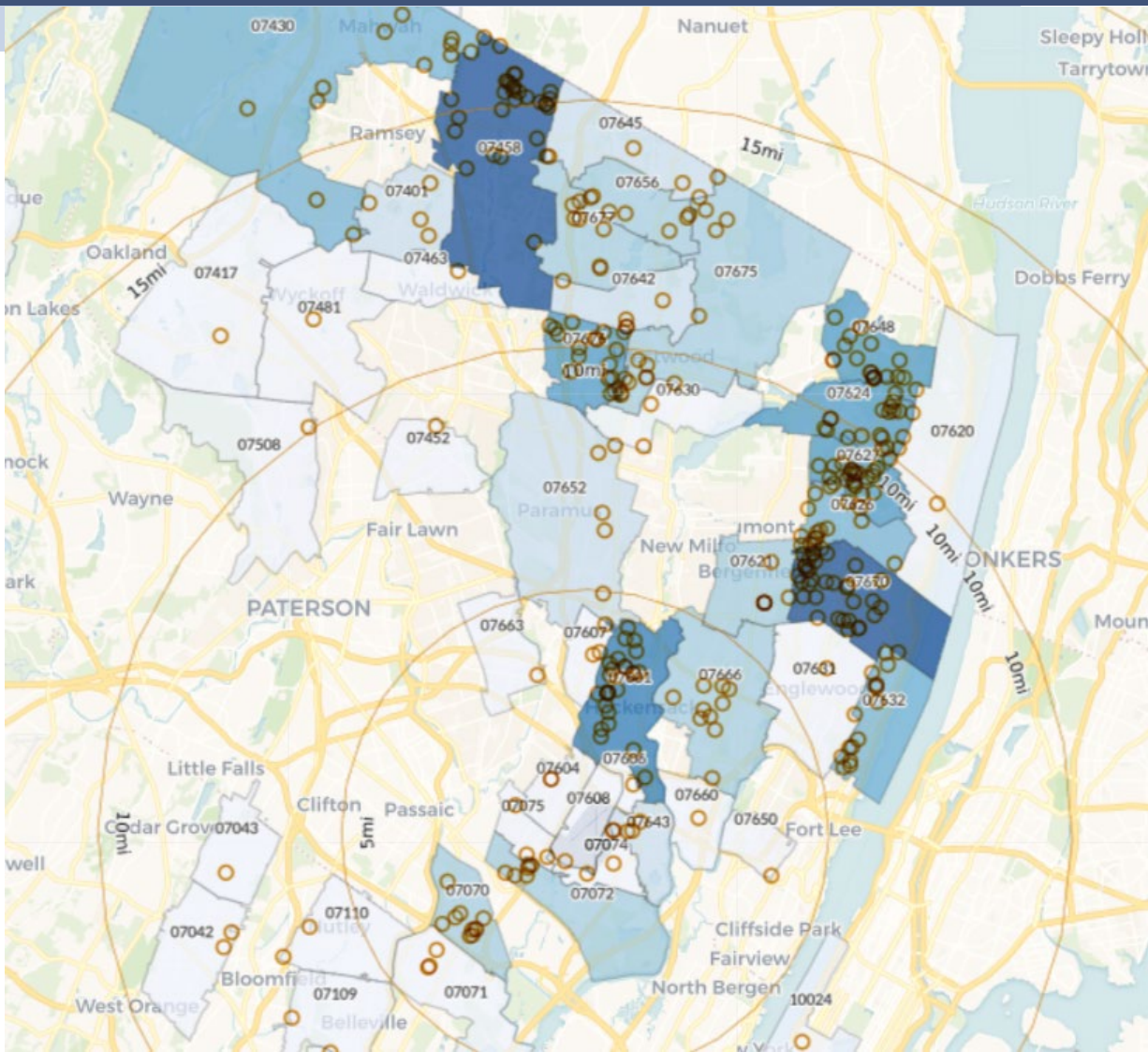
Complaint Locations June 2022

5-mile Radius



Complaint Locations June 2022

20-mile radius



June Noise Violations

Violation Level	June 2022	YTD 2022	June 2021	YTD 2021
First	3	28	14	31
Second	0	1	3	5
Third	0	0	0	0
Warning	4	16	4	8

3rd Quarter 2022 TANAAC Meeting

TANAAC Meeting will take place Wednesday July 27th at 6:00 pm

Virtual format (Microsoft Teams)

Contact Gabe Andino at gandino@teb.com for meeting link

TEB Manager's Meeting



HURRICANE SEASON and PLAN REVIEW

Teterboro Airport – 2022 Hurricane Season and Plan Review

July 13, 2022

TEB 2022 Hurricane Plan Review



Presented July 13, 2022, to TEB Airport Managers Meeting

Agenda

- **Hurricane Background**
- **Hurricane Season Outlook**
- **Airport Hurricane Emergency Response Plan**
- **Airport Tenant Hurricane Response Plan(s)**
- **Communications**
- **Questions / Comments**

TEB 2022 Hurricane Plan Review

Presented July 13, 2022, to TEB Airport Managers Meeting

What is a Hurricane?

- **A hurricane is an area of low pressure that forms over deep warm ocean waters (at least 80°F) with wind speeds of 74 mph or higher**
- **Characterized by clouds and thunderstorms that rotate counterclockwise around a defined center of circulation**



- ✓ **When is Hurricane Season?**
- ✓ **When should “We” begin to prepare?**

TEB 2022 Hurricane Plan Review

Presented July 13, 2022, to TEB Airport Managers Meeting

How Does a Hurricane Form?

Tropical Depression

- Maximum sustained winds of 38 mph or less.
- Identified by a number (ex: TD 24).

Tropical Storm

- Maximum sustained winds of 39-73 mph.
- Identified by a name (ex: Tropical Storm Wilma).

Hurricane

- Maximum sustained winds of 74 mph or higher.
- Identified by a name (ex: Hurricane Wilma).

TEB 2022 Hurricane Plan Review

Presented July 13, 2022, to TEB Airport Managers Meeting

Saffir-Simpson Hurricane Wind Scale

Category	Sustained Winds	Damage
1	74-95 mph	Minimal (some roof and siding damages; large tree branches snapped)
2	96-110 mph	Moderate (major roof and siding damage; trees snapped or uprooted resulting in significant power outages)
3	111-129 mph	Extensive (damage to well built homes; many trees snapped or uprooted resulting in significant power outages)
4	130-156 mph	Extreme (significant roof and exterior wall damage to well built homes; most trees snapped or uprooted and power poles downed)
5	≥157 mph	Catastrophic (total roof failure and wall collapse of many homes; residential areas isolated by fallen trees and power poles)

TEB 2022 Hurricane Plan Review



Presented July 13, 2022, to TEB Airport Managers Meeting

Primary Hazards

- **Storm Surge**
 - The abnormal rise in water levels along the coast generated by a storm's winds
 - Can extend many miles inland
 - This is the primary threat to coastal airports
- **Flooding from Heavy Rainfall**
 - Widespread torrential rainfall can cause flooding hundreds of miles
 - Amount of rain depends on the size and forward speed of the storm, not the intensity
 - This is the primary threat to inland airport locations

Presented July 13, 2022, to TEB Airport Managers Meeting

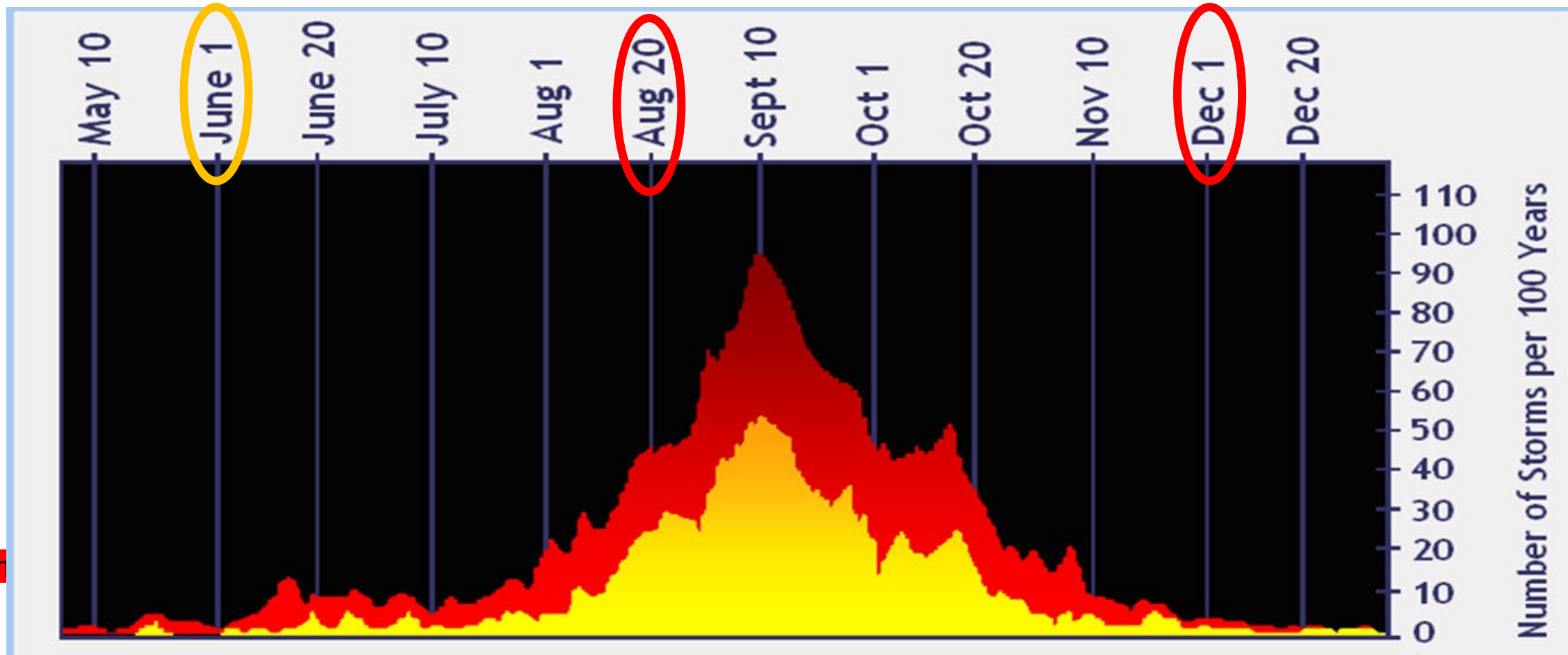
Hurricane Season Outlook

- **The Atlantic hurricane season extends from June 1 through November 30**
- **Mid-August through November 30, for the TEB region**
- **National Oceanic and Atmospheric Administration (NOAA)**
 - **NOAA predicts an Above-Normal Season Likely**
 - **65% chance of an above-normal season, a 25% chance of a near-normal season, and a 10% chance of a below-normal season**
 - **For 2022, a likely range of 14-21 named storms, of which 6-10 could become hurricanes, including 3 to 6 major hurricanes.**

TEB 2022 Hurricane Plan Review

Presented July 13, 2022, to TEB Airport Managers Meeting

Atlantic Hurricane Season



Tropical Storm
Hurricane

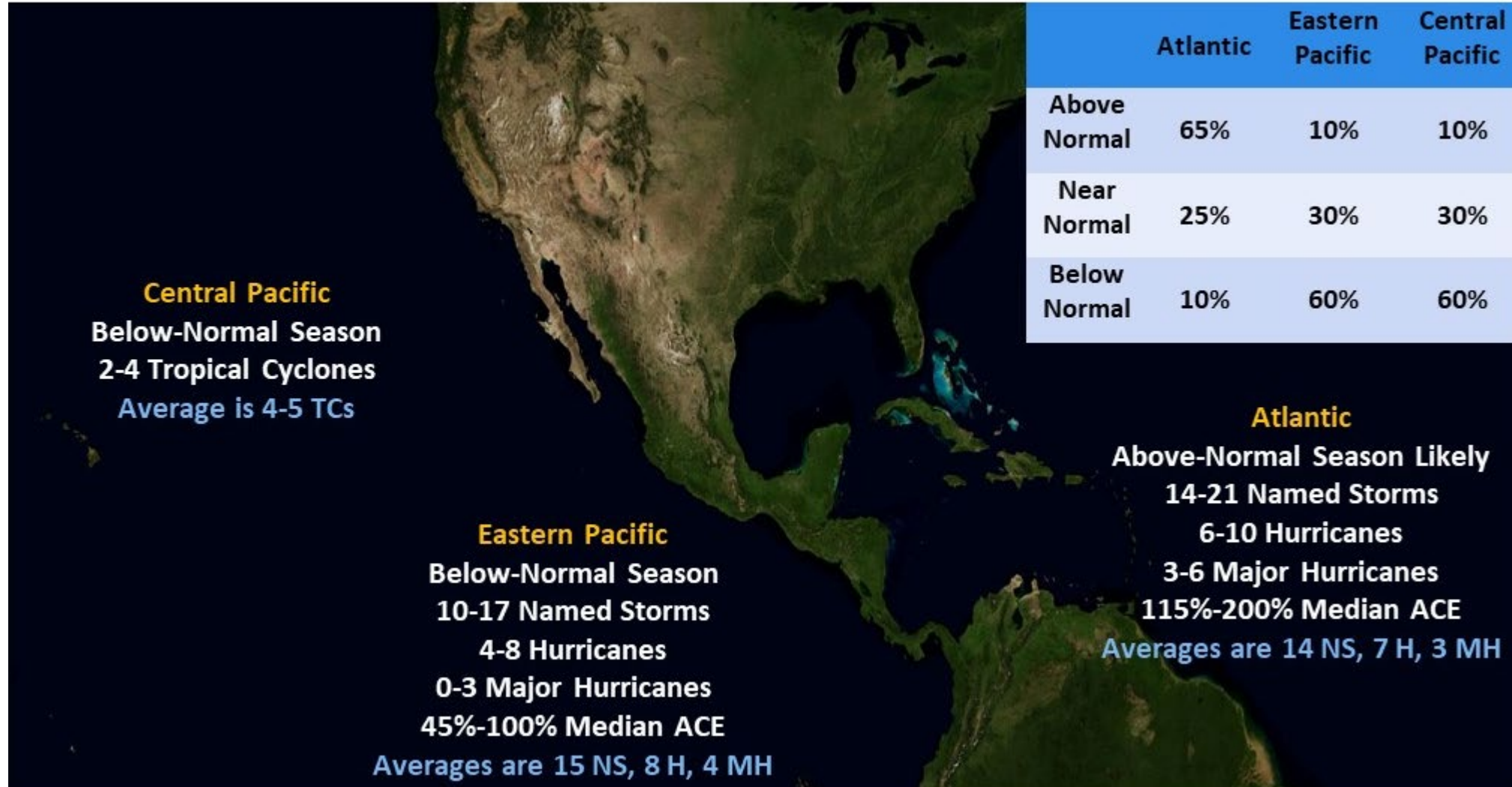
TEB 2022 Hurricane Plan Review

**PORT
AUTHORITY
NY NJ**

AIR LAND RAIL SEA

Presented July 13, 2022, to TEB Airport Managers Meeting

NOAA's 2022 Hurricane Season Outlooks



TEB 2022 Hurricane Plan Review



Presented July 13, 2022, to TEB Airport Managers Meeting

Airport Hurricane Emergency Response Plan

- **Airport Hurricane Emergency Response Plan**
 - Annual Review of the Plan
 - Update the Plan if required
- **Review Responsibilities and Required Actions**
 - Pre-storm - Storm - Post-storm
- **Equipment, Materials and Supplies Inventory and Inspection**
- **Review and Update Communications Lists**
- **Conduct Workshop with Port Authority OEM (NWS, NJ DOT, PA OEM, Airport Management)**

TEB 2022 Hurricane Plan Review



Presented July 13, 2022, to TEB Airport Managers Meeting

Communications

- **Conference Calls**
- **Teams Virtual Meetings**
- **Everbridge Messages**
- **Virtual EOC (If required)**
- **NOTAMS / FICONS**
- **Faxes**
- **Telephone Communications**

Presented July 13, 2022, to TEB Airport Managers Meeting

Airport Tenant Hurricane Response Plan(s)

- **Airport Tenant Hurricane Response Plan(s)**
 - **Ensure your plan is current**
 - **Reference the Airport Hurricane Emergency Response Plan**
 - **Contact Names and Phone Numbers - Updated**
 - **Make your plan available to all employees / tenants**
 - **Communications Plans Updated (contacts current)**
 - **Be prepared, use checklists**

TEB 2022 Hurricane Plan Review

Presented July 13, 2022, to TEB Airport Managers Meeting

Questions / Comments



TEB Manager's Meeting



OPEN DISCUSSION

TEB Manager's Meeting

July 2022



UPCOMING MEETINGS

- TANAAC – July 27 – 6:00PM - Virtual
- Manager's Meeting – August 10 – 10:30AM – Virtual

Thank You!





Safety Accredited

This airport has been accredited for our cleaning and safety practices.