

# KTEB Arrivals Preferential Routing from the Caribbean (OCA West)

Presented to: Flight Plan Filers  
By: New York ARTCC  
Date: April 5, 2023



Federal Aviation  
Administration

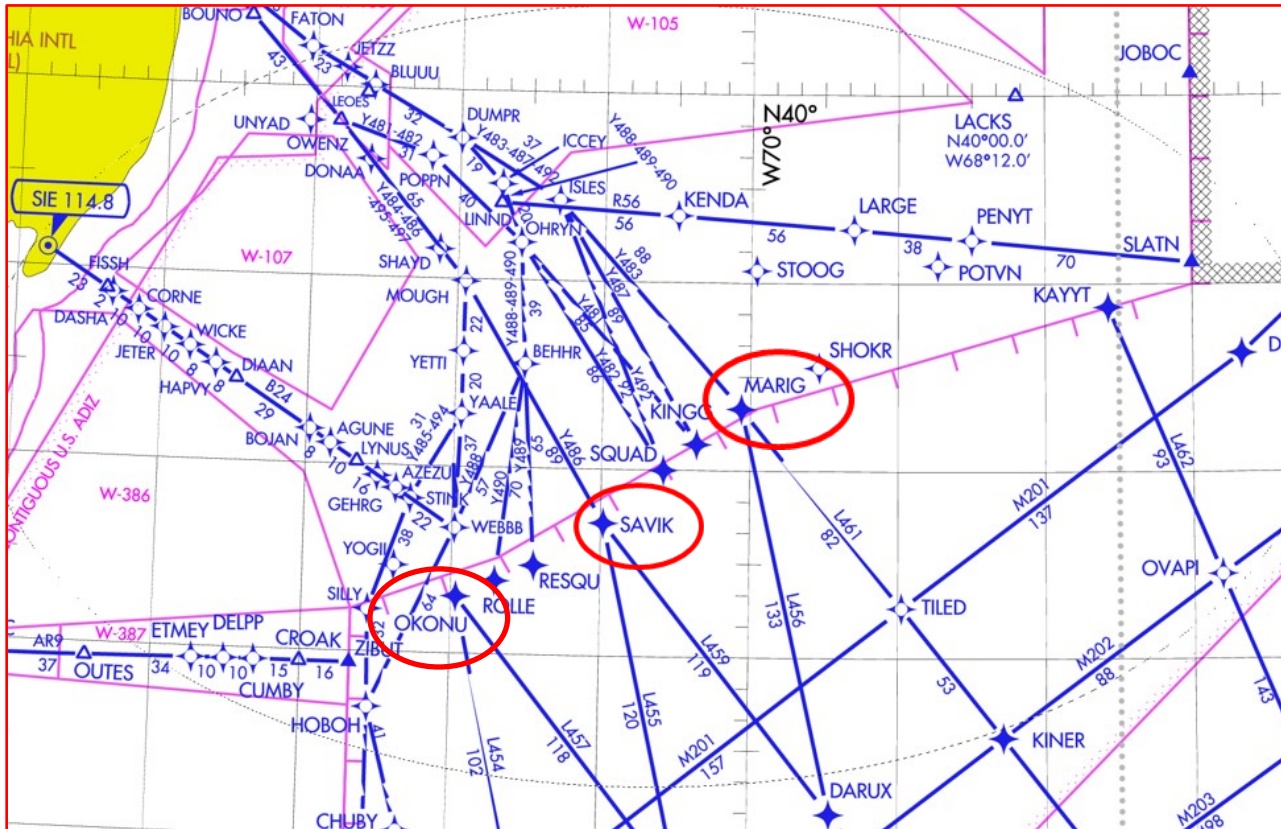


# Issue:

- Over the past year New York ARTCC has encountered a significant number of General Aviation flights flying through the Caribbean landing KTEB with unusable/non-preferential routing to KTEB.
- This requires ZNY to issue airborne reroutes which has led to workload issues and questions and confusion from flight crews.
- In follow-up discussions with flight crews it became apparent to ZNY that they were unaware of the KTEB preferential routing; the crews we spoke to explained they receive their routings via various commercial flight planning software (e.g. ForeFlight).



# Exiting OCA West

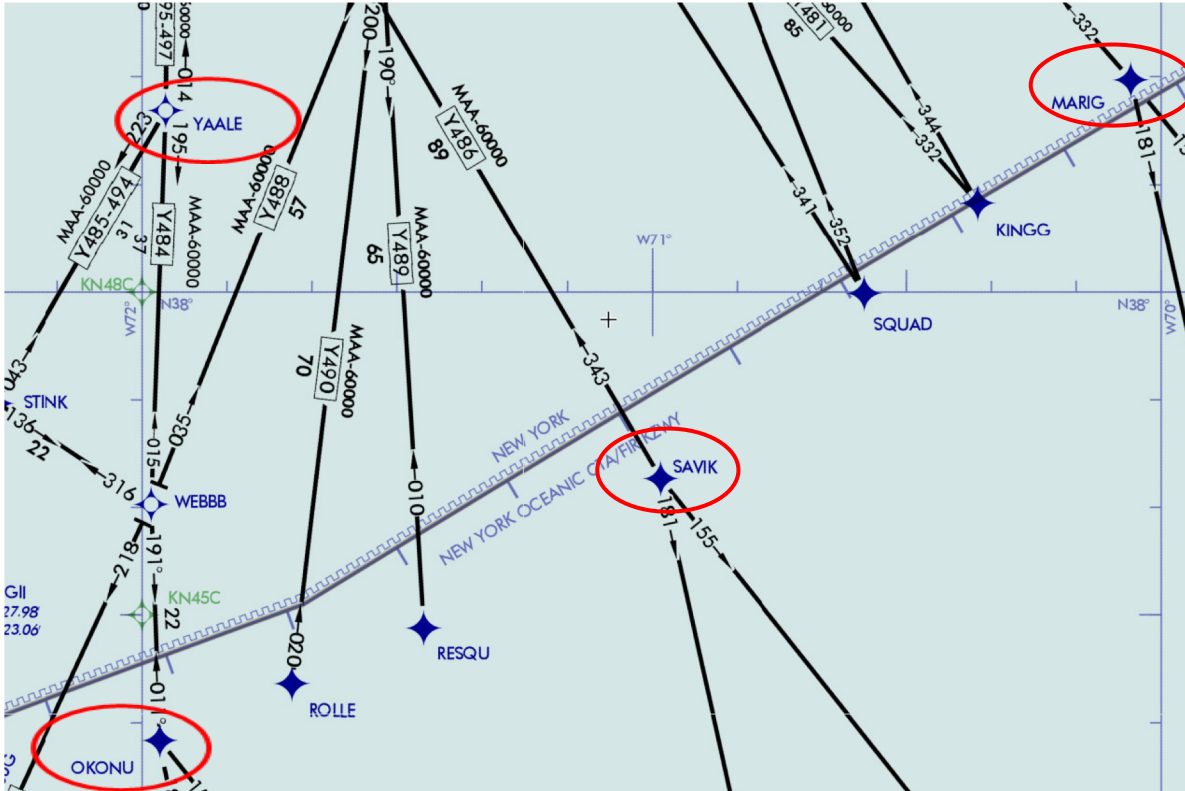


All flights exiting OCA west shall file over one of the following three (3) northbound exit waypoints:

- OKONU
- SAVIK
- MARIG



## Exiting OCA West (con't)



Following the exit point aircraft should file to KTEB via waypoint YAALE followed by the preferential routing:

- OKONU Y484 YAALE  
Y497 SUBBS CYN GXU  
RBV V249 METRO  
KTEB
- SAVIK YAALE Y497  
SUBBS CYN GXU RBV  
V249 METRO KTEB
- MARIG YAALE Y497  
SUBBS CYN GXU RBV  
V249 METRO KTEB



- YAALE Y497  
SUBBS CYN GXU  
RBV V249 METRO  
KTEB

# Questions?

- **NY ARTCC Contact:**

**Shawn Knight:**

***ZNY Manager New York ARTCC***

Plans & Requirements (ZNY-510)

Domestic Airspace & Procedures (ZNY-530)

International Airspace & Procedures (ZNY-590)

Email: [shawn.g.knight@faa.gov](mailto:shawn.g.knight@faa.gov)

ZNY: 631-468-1018

FAX: 631-468-4229

