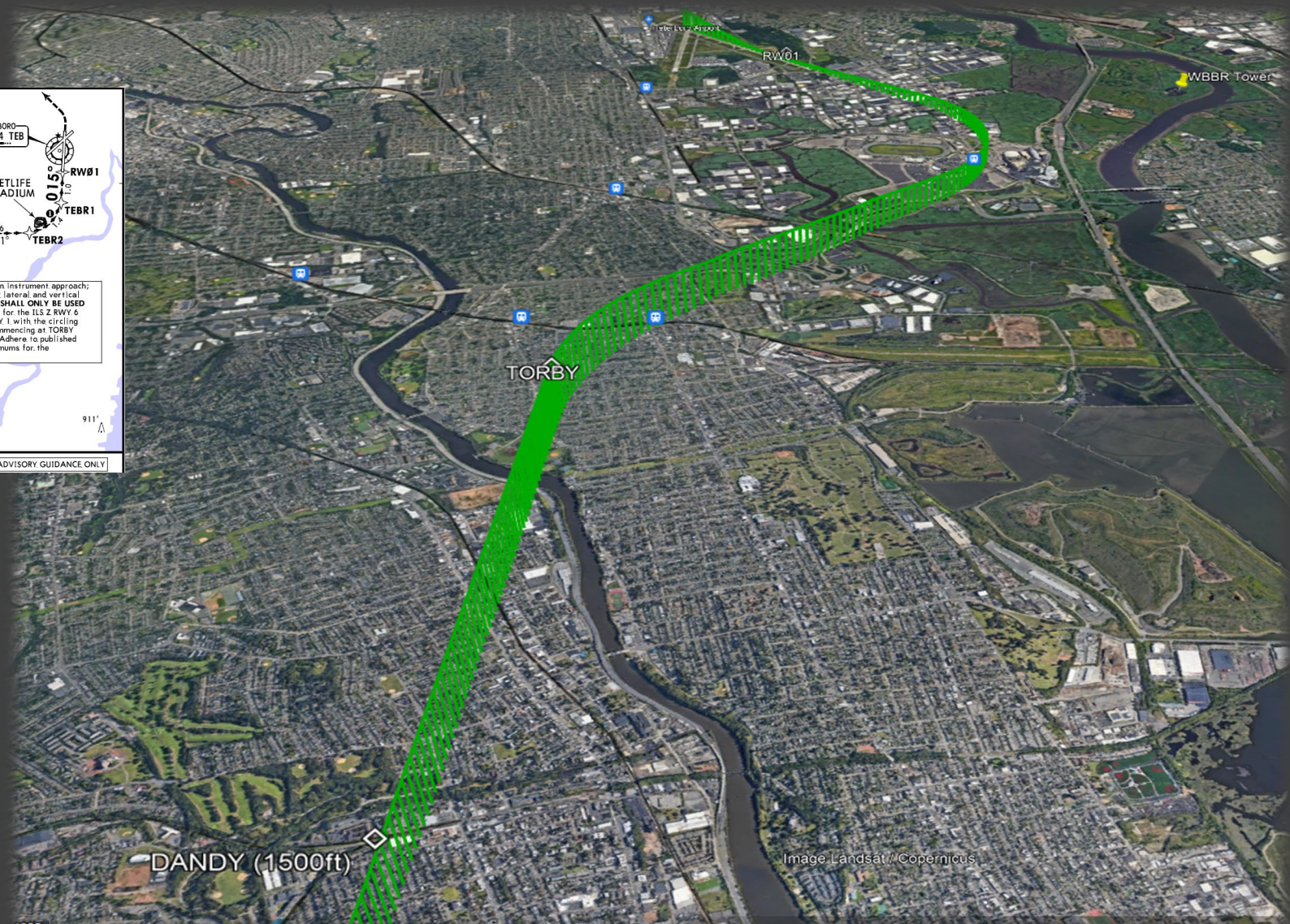
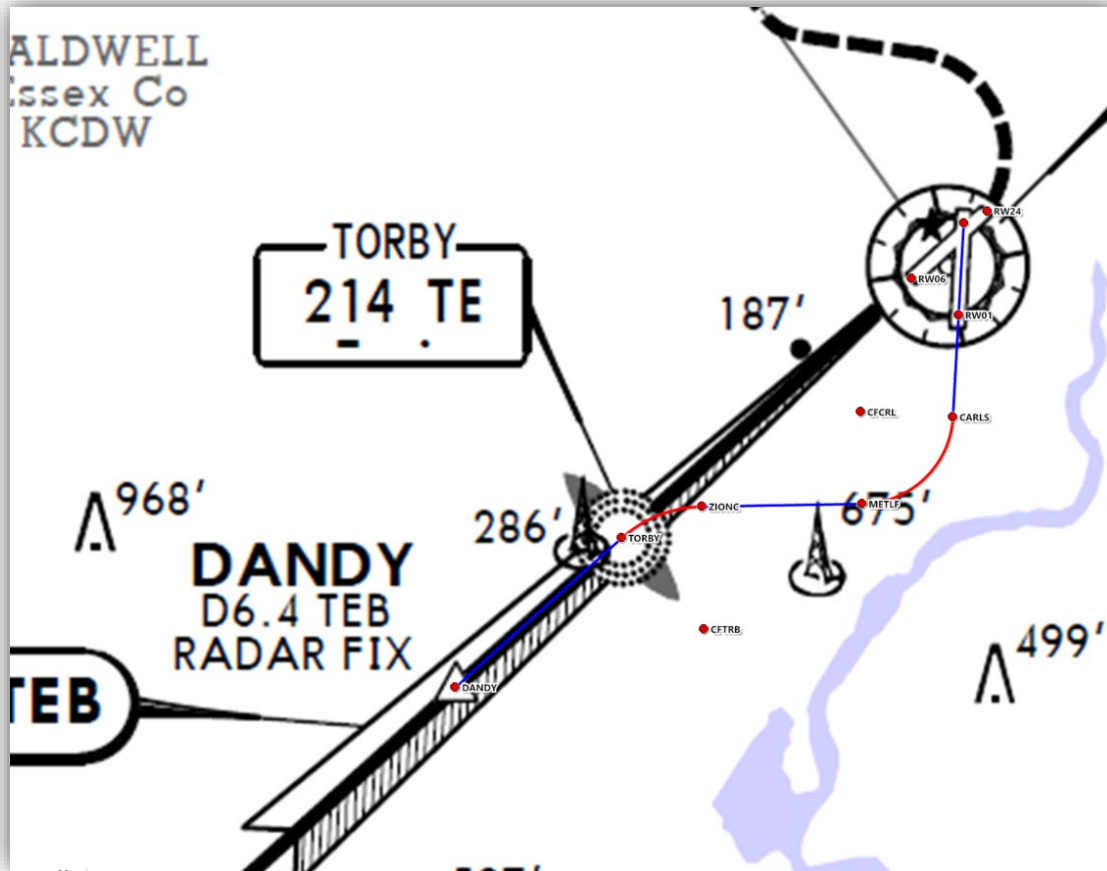


Honeywell

September 2023



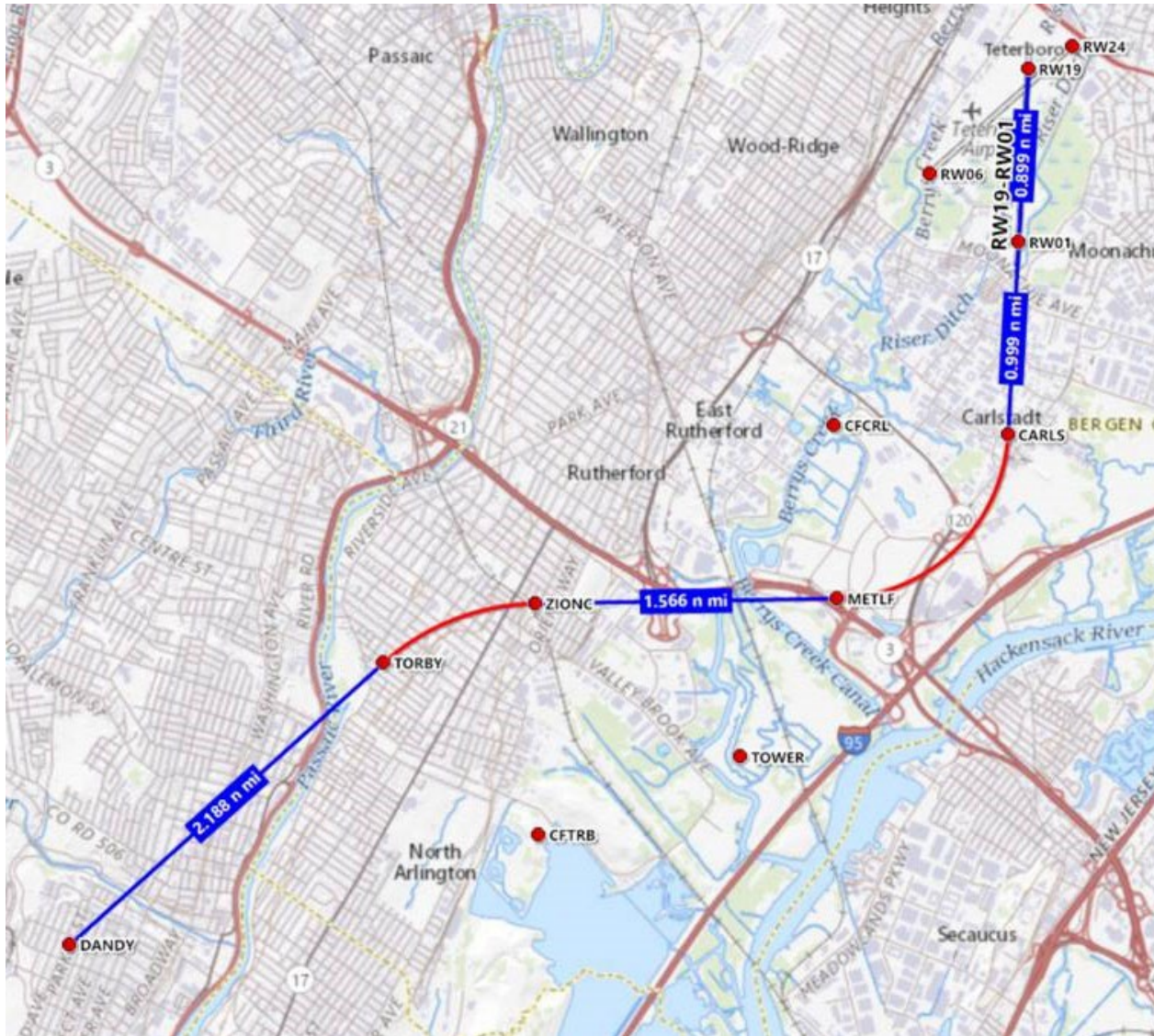
SOME HISTORY ON THIS. . .



Our Objective:

- Provide stable and repeatable, lateral and vertical guidance to safely execute the circling maneuver when cleared “ILS Rwy 6 Circle Rwy 1”
- Mimic the current flight paths so that use of the procedure would be seamless and transparent to ATC for ease of use

SOME HISTORY ON THIS...



FMS Guided Visual Rwy 1:

- Easiest/quickest to implement
- Follows existing flight paths
- Prototype for future instrument approach
- Easily manage eligible aircraft

KTEB/TBB
TETERBORO

18. AUG. 23
(Private)

RNAV H Rwy 1

D-ATIS	NEW YORK Approach (R)	TETERBORO Tower	Ground
114.2. 132.85	127.6	119.5	121.9
RNAV	Final Appch Crs 015°	TORBY 1300' (1292')	MDA(H) Refer to Minimums
	Apt. Elev 8' TDZE 8'		Apt. Elev 8' TDZE 8'

MISSED APCH: Climb to 1000', then climbing LEFT turn to 2000' direct TEBLE, cross TEBLE at or below 2000', then climb to 3000' on track 272° to UBUCK and hold.

Alt. Set: INCHES Trans level: FL 180 Trans alt: 1800'

1. GPS and Rf; required. 2. FMS Advisory Guidance Only. 3. Recommend being fully configured for landing by TORBY. 4. PF will load RNAV H Rwy 1. (PF must NOT display/preview ILS). 5. PM must display and monitor ILS Z Rwy 6 / (Freq 108.9 / Course 060'). 6. Arrn approach prior to TORBY. 7. Direct-to after DANDY N/A. 8. Missed approach is coded for ILS Z Rwy 6.

MSA TEB, VOR 23 NM

NOT TO SCALE

ADVISORY GUIDANCE ONLY

Distance (NM)	Altitude (ft)	Speed (Kts)	Angle (deg)
10.2	70	90	100
3.1	429	551	612
7.1	612	735	857
2.2	980		
4.9			
0.9			
4.0			
1.6			
2.4			
1.0			
1.0			
0.0			

Wind Speed (Kts)	Wind Dir (deg)	Temp (deg C)	Dew Pt (deg C)	Altimeter (inHg)
70	90	100	120	140
429	551	612	735	857
980				

MAP as RW1

WEATHER MINIMUMS

Adhere to published circling minimums for the ILS Z Rwy 6 (Jepp Chart 11-1)

REIL VASI-R

1000' ↑

2000' LT

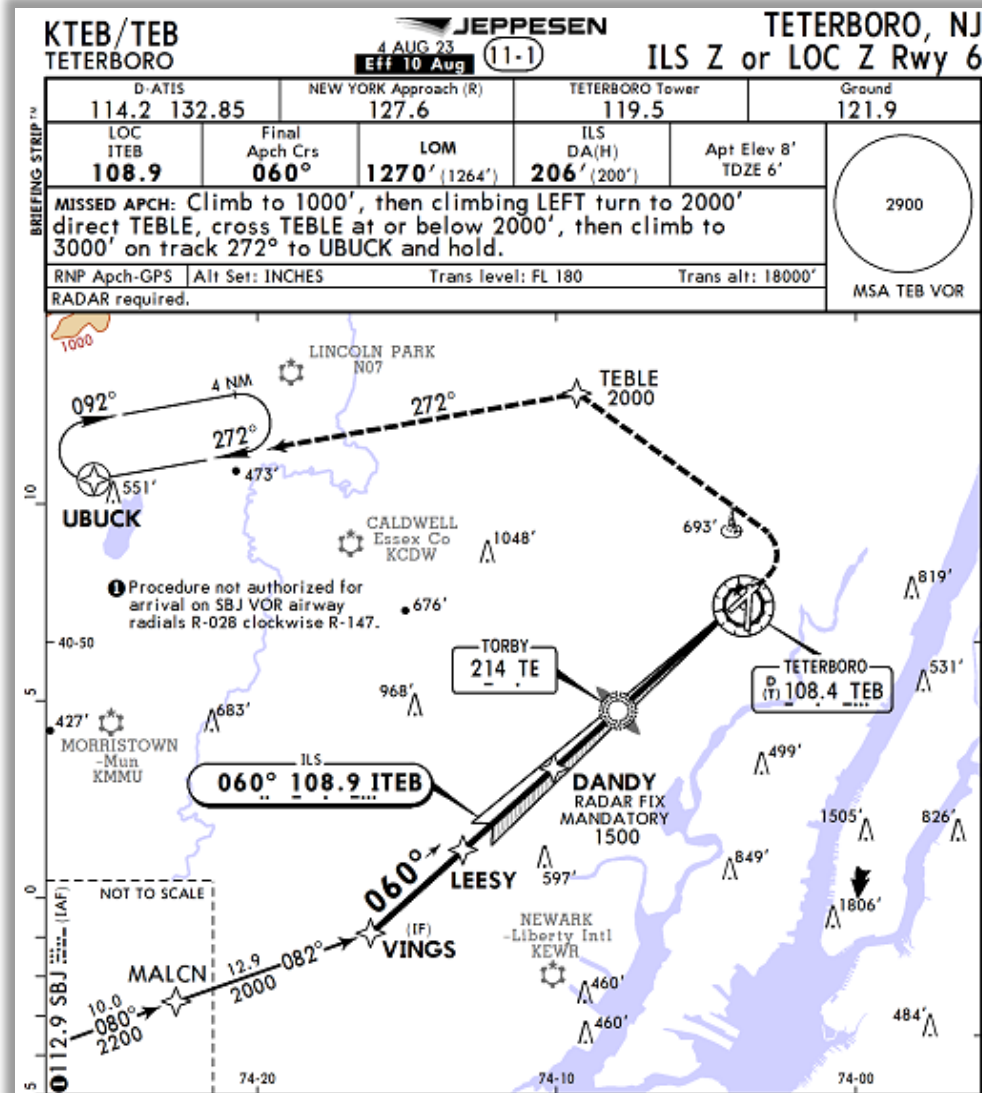
TEBLE

Guided Visual Rwy 1:

- Available since beginning of year to RNP Nav database subscribers
- Jeppesen chart with crew briefing sheet available
- Positive feedback from operators who have flown the guidance

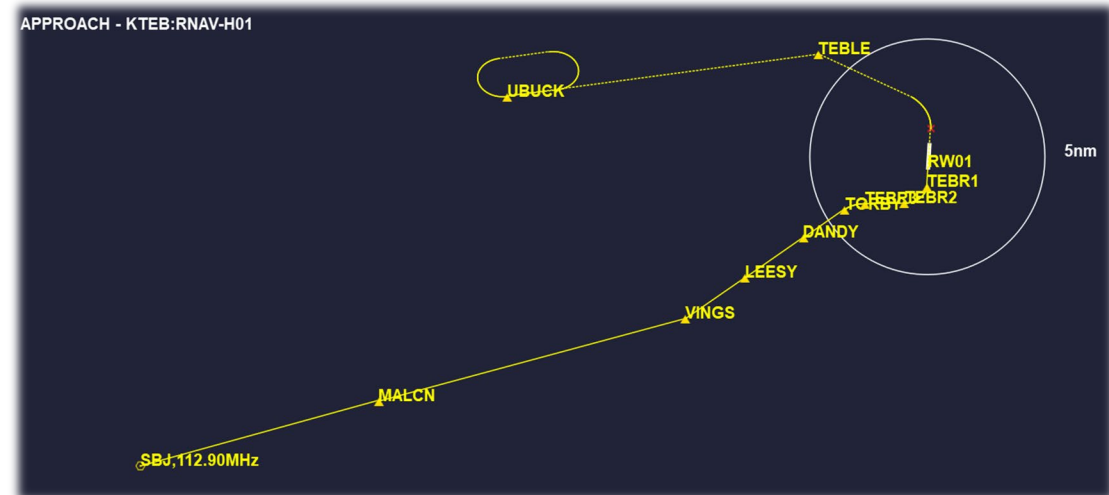
RNAV H Rwy 1 Video

RECENT PROCEDURE CHANGES...

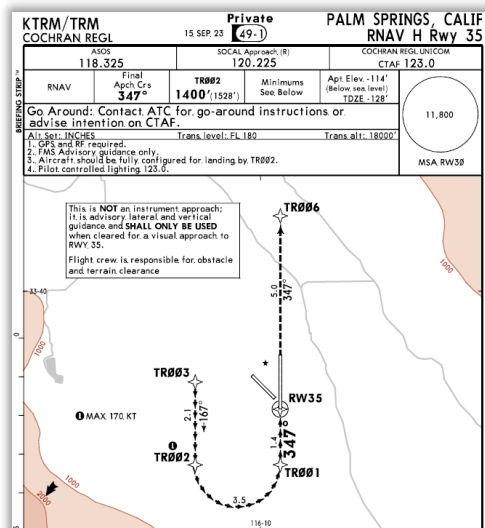
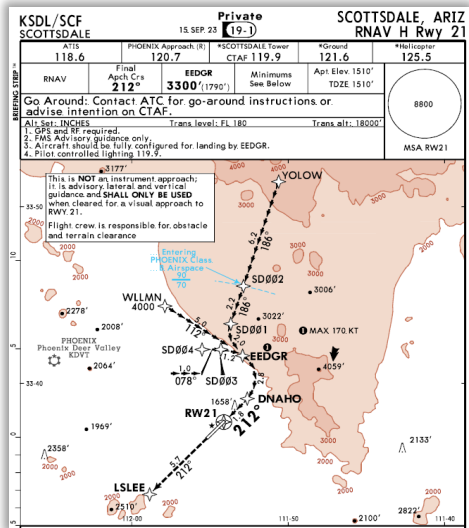
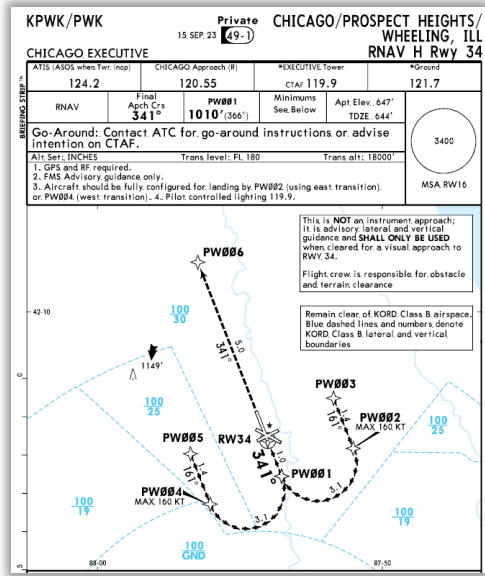
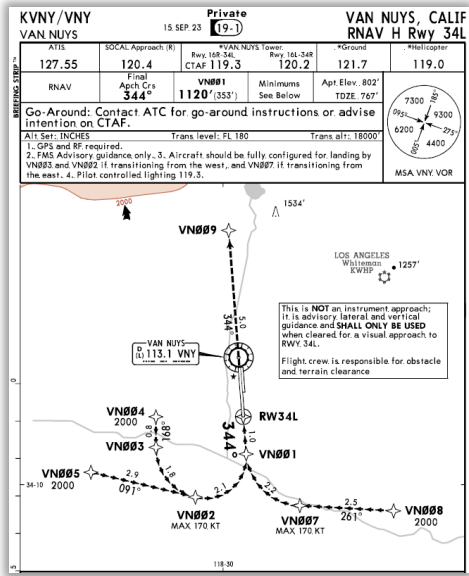


ILS Z Rwy 6:

- New RNP fixes and missed approach procedure
- Amended FMS guided visual to incorporate changes
- Renamed “RNAV H Rwy 1”



OTHER AIRPORTS...



Current FMS Guided Visuals:

- KPWK Rwy 34
- KVNK Rwy 34L
- KSDL Rwy 21
- KTRM Rwy 35

In Work:

- KPDK Rwy 3R
- KHND Rwy 17R / 35L
- MMSL Rwy 11

MOVING FORWARD. . .

New Navigation Database Offerings:

- KTEB and other “guided visuals” already included in RNP database
- New databases for non-RNP customers
 - Tier one: standard nav data + guided visuals
 - Including KTEB, KSDL, KPWK, KVNY, and future additions
 - Tier two: standard nav data + guided visuals + advanced nav instrument specials
 - Including KSUN, KASE, KTRK, and 25 more
 - Tier three: RNP AR validated nav database + guided visuals + advanced nav instrument specials
 - Including KASE, KEGE and all charts on forward display

THANK YOU

For More Information:

FTS@Honeywell.com

Jim Johnson

James.Johnson2@Honeywell.com

Scott Roesch

srr@honeywell.com

Honeywell

Derek Fiedler

Derek.Fiedler@Honeywell.com